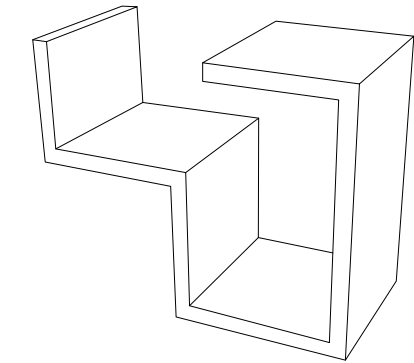


**CARACTERÍSTICAS / FEATURES**

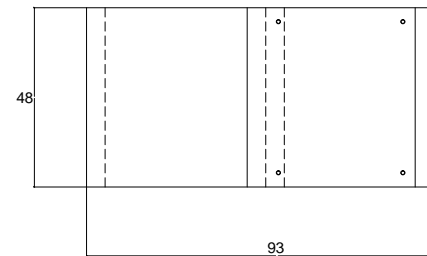
**Material** SMC  
**Acabado** liso  
**Dimensiones** 1.93 x a.48 x h.80 cm  
**Color** ver carta de colores  
**Fijación** mediante resina epoxy  
**Peso** 150 Kg

**Material** SMC  
**Finish** smooth  
**Dimensions** 1.93 x a.48 x h.80 cm  
**Colour** see colour catalogue  
**Fixing** anchored with epoxy resin  
**Weight** 150 Kg

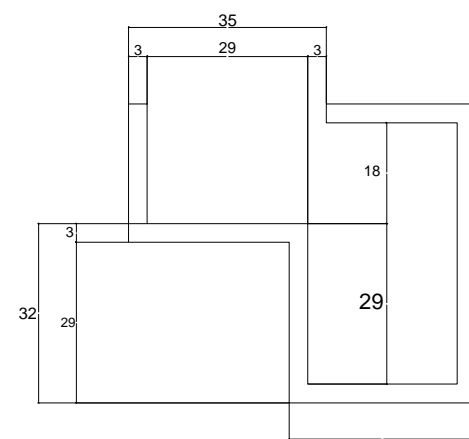
diseñador / design: Elena del Pozo



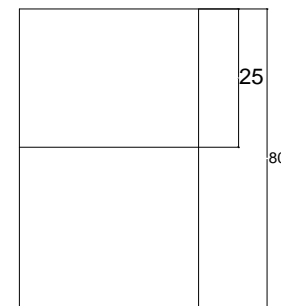
**GEOMETRIA / GEOMETRY**



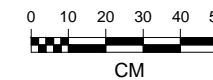
VISTA INFERIOR / BOTTOM VIEW



ALZADO / FRONT VIEW



PERFIL / PROFILE VIEW

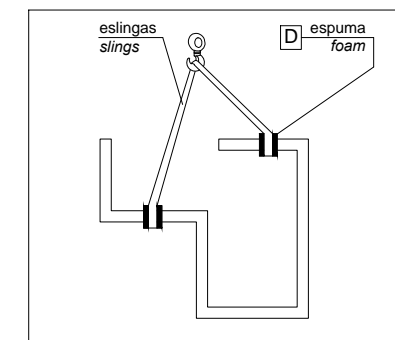


**MANIPULACIÓN E INSTALACIÓN / HANDLING AND INSTALLATION**

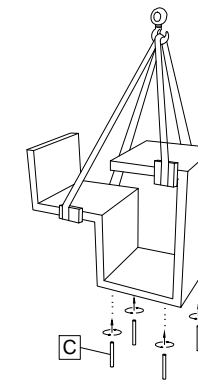
- 1 elevar y enroscar la varilla  
lift and thread the rod

**MUY IMPORTANTE / VERY IMPORTANT**

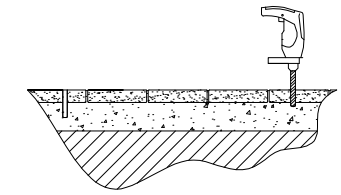
proteger las esquinas con espuma del embalaje  
protect the corners with packing foam



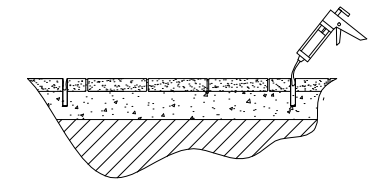
elevación / hoisting  
P= 140 Kg



- 2 perforar dos agujeros / drill holes

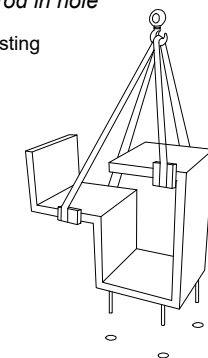


- 3 verter resina epoxy / pour resin epoxy



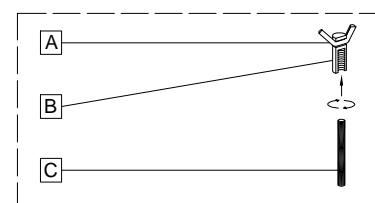
- 4 insertar la varilla en el agujero  
insert metal rod in hole

elevación / hoisting  
P= 140 Kg

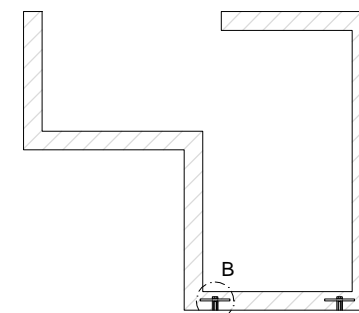


**ESPECIFICACIONES / SPECIFICATIONS**

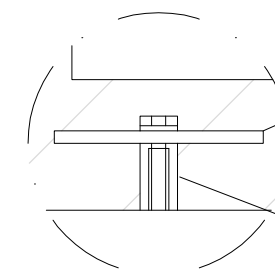
SISTEMA DE FIJACIÓN / ANCHORAGE SYSTEM



- A barra corrugada / corrugated rod
- B casquillo roscado / thread sleeve
- C varilla roscada / thread the rod
- D espuma embalaje / packing foam



SECCIÓN A-A' / SECTION A-A'



DETALLE / DETAIL: B

Barra corrugada acero negro Ø6 - REA6  
Corrugated rod black steel Ø6 - REA6

Casquillo M12 acero zincado alta precisión  
Tube M12 - Galvanized steel pipe high precision