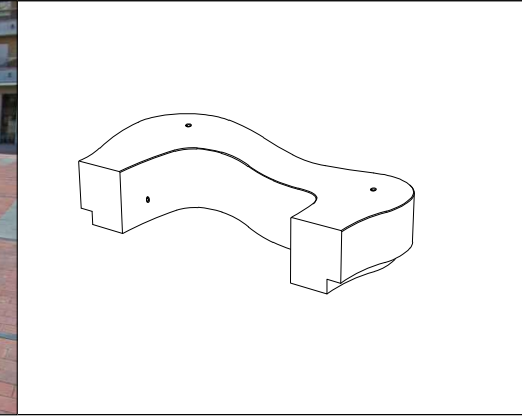


CARACTERISTICAS / FEATURES

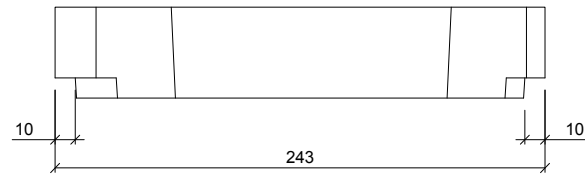
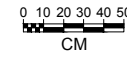
Material hormigón petra 1
Acabado decapado e hidrofugado
Dimensiones l. 243, a. 131, h. 45 cm
Color ver carta de colores
Fijación simplemente apoyado o mediante resina epoxi
Peso 1815 kg
Bulto 330 x 165 x 60 cm
Peso bulto 3590 kg

Material precast concrete petra 1
Finish scaled and waterproofed
Dimensions l. 243, w. 131, h. 45 cm
Colour see colour catalogue
Fixing resting on the ground or anchored with epoxy resin
Weight 1,815 kg
Package 330 x 165 x 60 cm
Weight package 3,590 kg

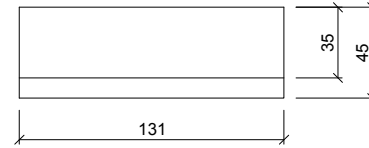
diseñador / design: Roger Albero



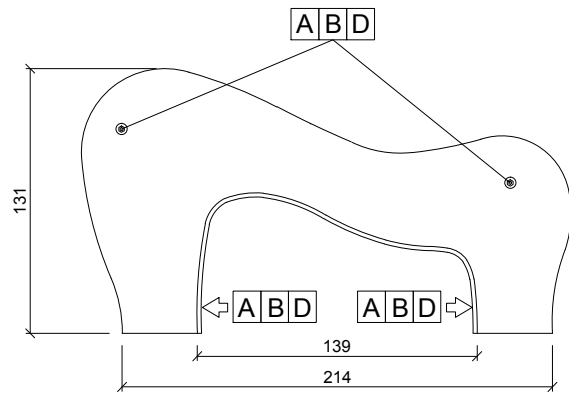
GEOMETRIA / GEOMETRY



ALZADO / FRONT VIEW

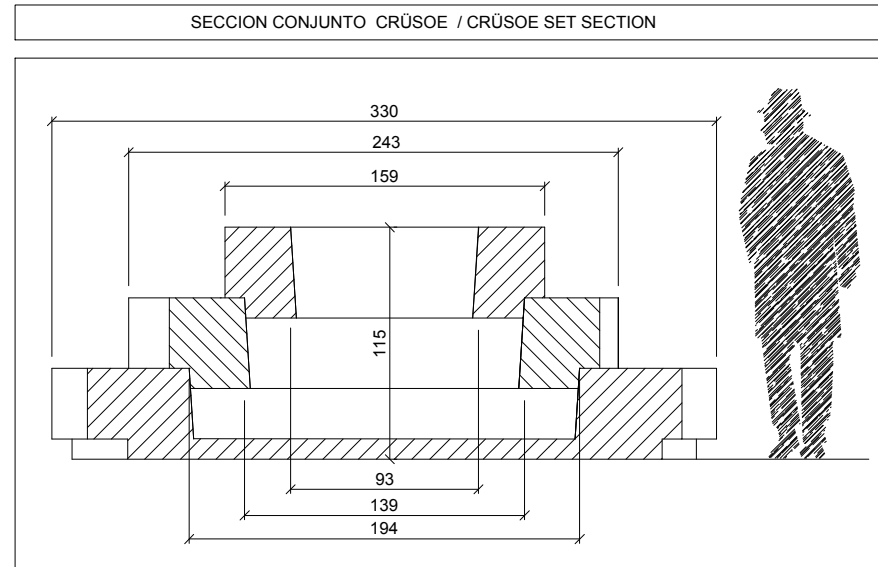


PERFIL / PROFILE



PLANTA / TOP VIEW

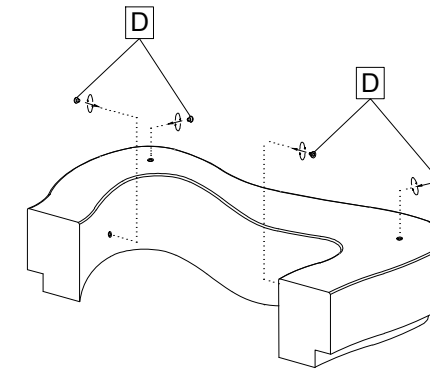
↑ ubicación del casquillo roscado
 location of threaded steel sleeve



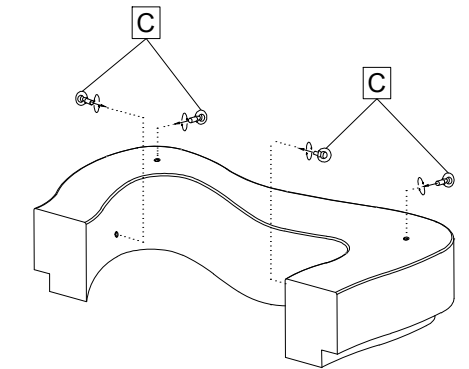
SECCION CONJUNTO CRUSOE / CRUSOE SET SECTION

MANIPULACION E INSTALACION / HANDLING AND INSTALLATION

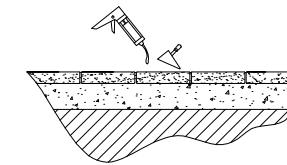
1 Extraer tapa / Extract stopper



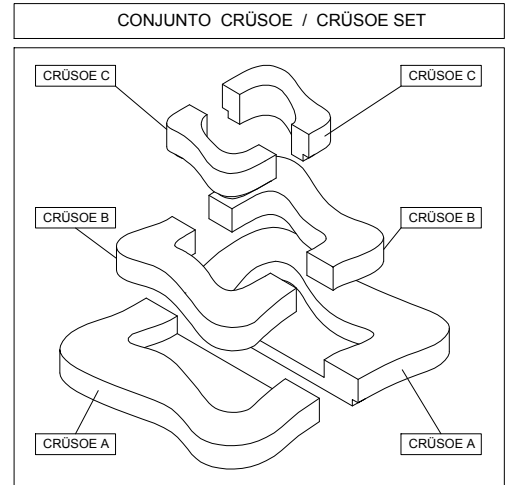
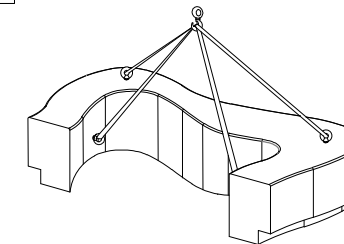
2 Enroscar cáncamo / Thread the eyebolt



3 Verter resina epoxi / Pour epoxy resin



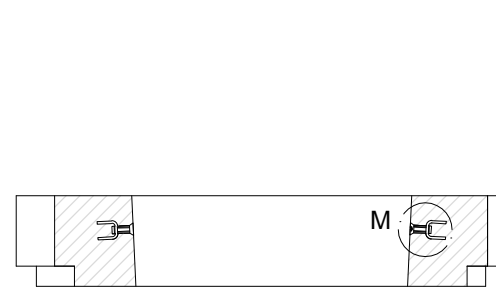
4 Elevar e instalar / Lift and install



CONJUNTO CRUSOE / CRUSOE SET

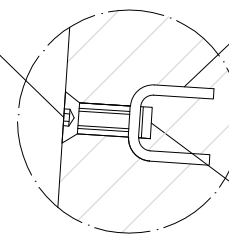
Se suministra instrucciones de montaje para el conjunto Crúsoe
 Assembly instructions are supplied for Crúsoe set assembly

ESPECIFICACIONES / SPECIFICATIONS



SECCION / SECTION

D Tornillo avellanado M16
 Countersunk screw M16

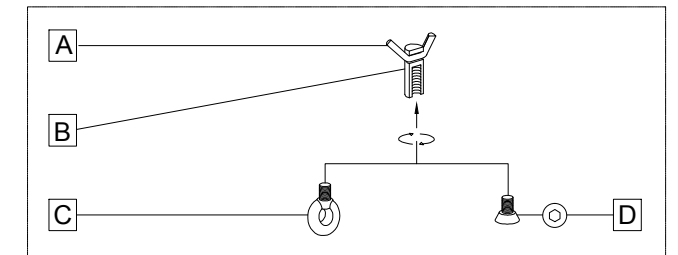


DETALLE M / DETAIL M

A Barra corrugada acero negro Ø10
 Corrugated black steel rod Ø10

B Casquillo M16 - Tubo acero zincado alta precisión
 Galvanized steel threaded sleeve M16 high precision

SISTEMA DE ELEVACION / LIFTING SYSTEM



A barra corrugada / corrugated rod C cáncamo / eyebolt
 B casquillo roscado / threaded sleeve D tapa / stopper