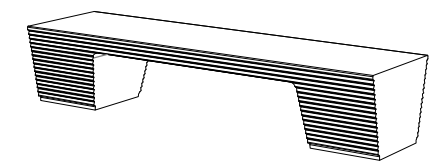


CARACTERISTICAS / FEATURES

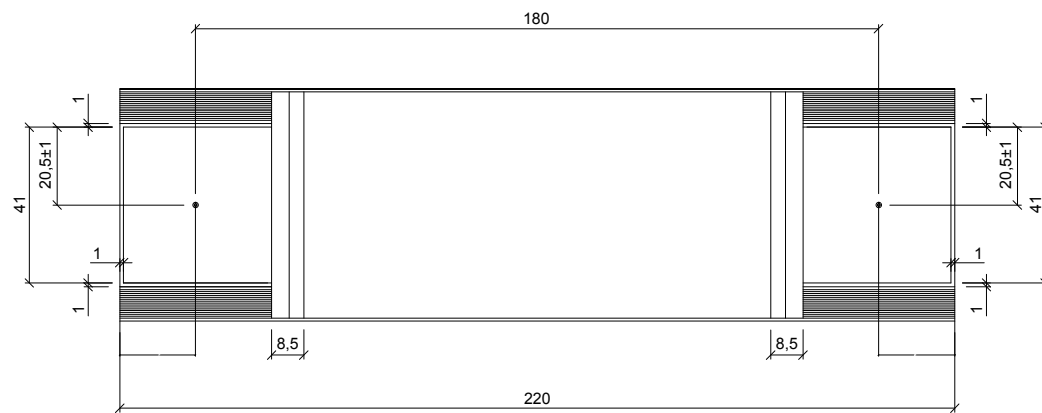
Material hormigón petra 1
Acabado decapado e hidrofugado
Dimensiones l. 220, a. 61, h. 46 cm
Color ver carta de colores
Fijación simplemente apoyado o mediante varillas metálicas
Peso 660 kg
Bulto 220 x 80 x 60 cm
Peso bulto 680 kg

Material concrete petra 1
Finish scaled and waterproofed
Dimensions l. 220, w. 61, h. 46 cm
Colour see colour catalogue
Fixing resting on the ground or anchored with metal rod
Weight 660 kg
Package 220 x 80 x 60 cm
Weight package 680 kg

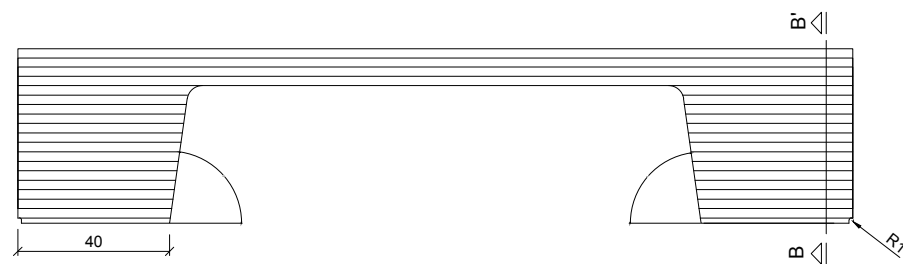
diseñador / design: Ton Riera



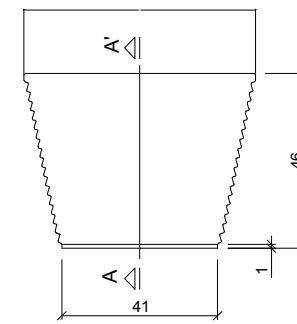
GEOMETRIA / GEOMETRY



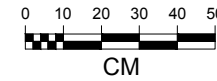
VISTA INFERIOR / BOTTOM VIEW



ALZADO / FRONT VIEW

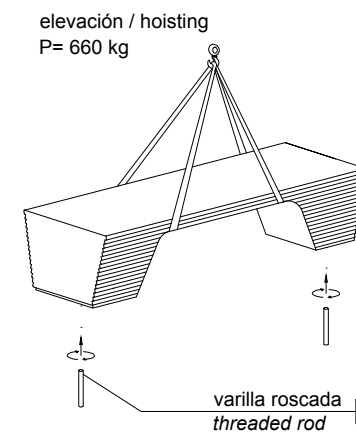


PERFIL / PROFILE

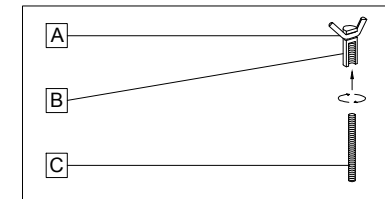


MANIPULACION E INSTALACION / HANDLING AND INSTALLATION

1 Enroscar la varilla / Thread the rod

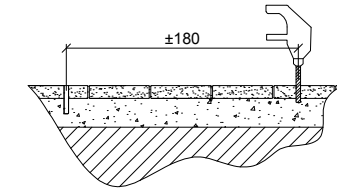


SISTEMA DE FIJACION / ANCHORAGE SYSTEM

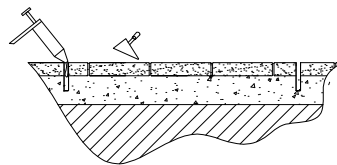


- A barra corrugada / corrugated rod
- B casquillo roscado / threaded sleeve
- C varilla roscada / threaded rod

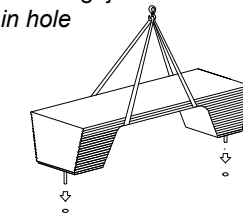
2 Perforar 2 agujeros Ø24 a distancia 180 cm
 Drill 2 holes Ø24 each at a distance of 180 cm



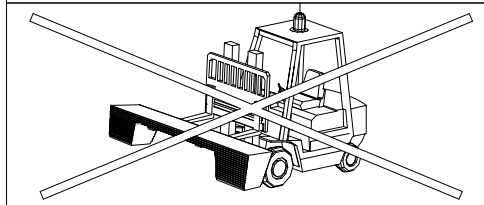
3 Verter resina epoxi / Pour epoxy resin



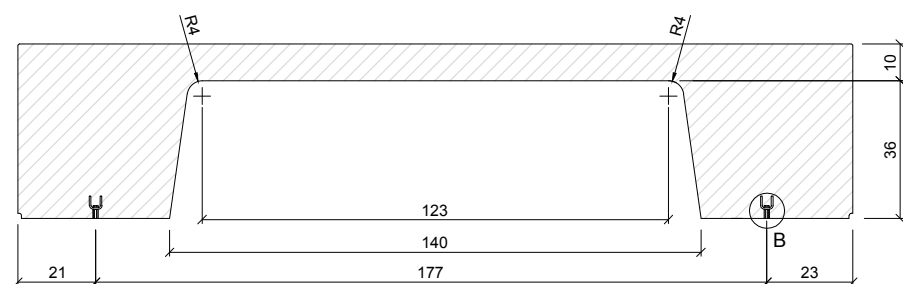
4 Insertar la varilla en el agujero
 Insert metal rod in hole



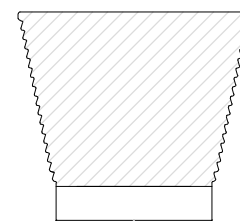
¡ATENCIÓN! No usar pala elevadora para la manipulación
 ATTENTION! Do not use Forklift for handling



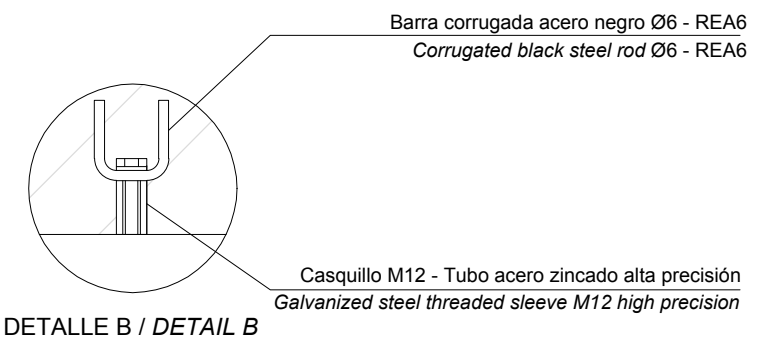
ESPECIFICACIONES / SPECIFICATIONS



SECCION A-A' / SECTION A-A'



SECCION B-B' / SECTION B-B'



DETALLE B / DETAIL B