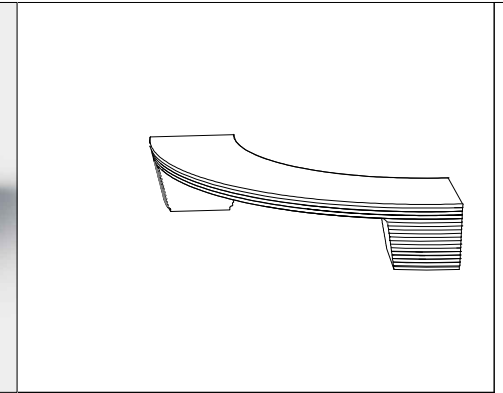


CARACTERISTICAS / FEATURES

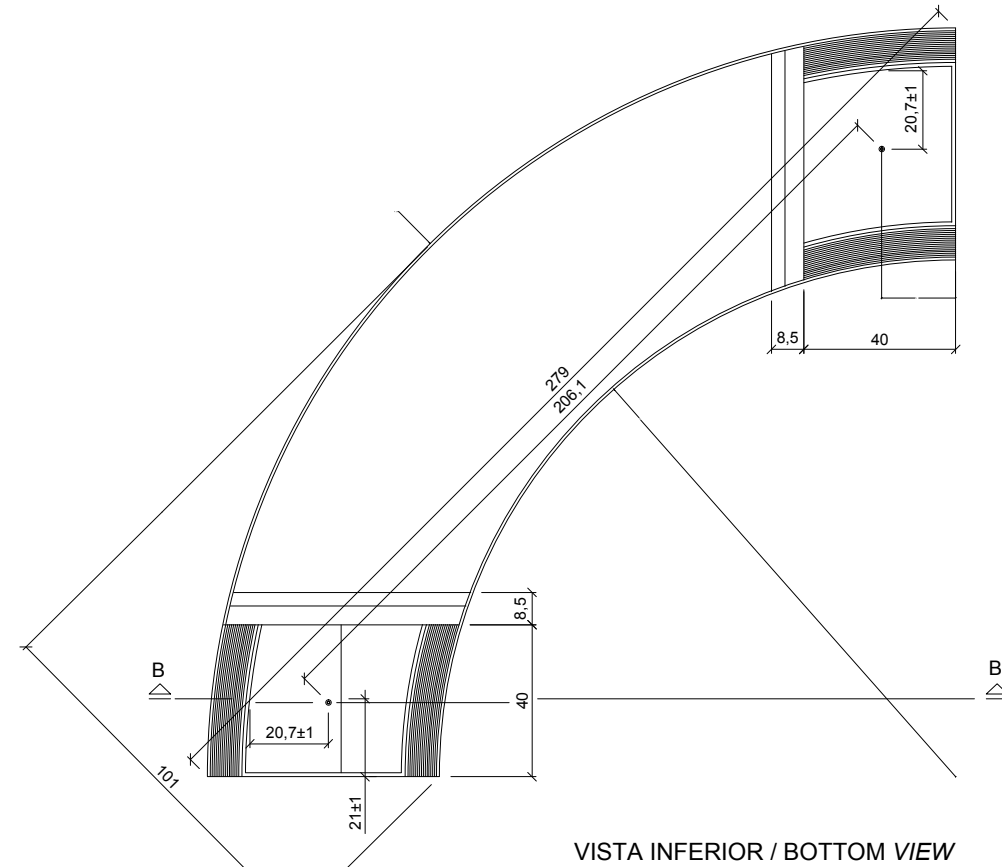
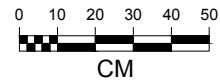
Material	hormigón Petra 1
Acabado	decapado e hidrofugado
Dimensiones	l. 279, a. 101, h. 46 cm
Color	ver carta de colores
Fijación	simplemente apoyado o mediante varillas metálicas
Peso	720 kg
Bulto	300 x 110 x 60 cm
Peso bulto	750 kg

Material	concrete Petra 1 scaled and waterproofed
Finish	
Dimensions	l. 279, w. 101, h. 46 cm
Colour	see colour catalogue
Fixing	resting on the ground or anchored with metal rod
Weight	720 kg
Package	300 x 110 x 60 cm
Weight package	750 kg

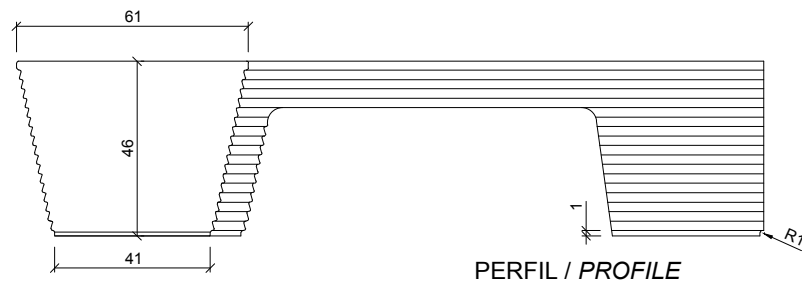
diseñador / design: Ton Riera



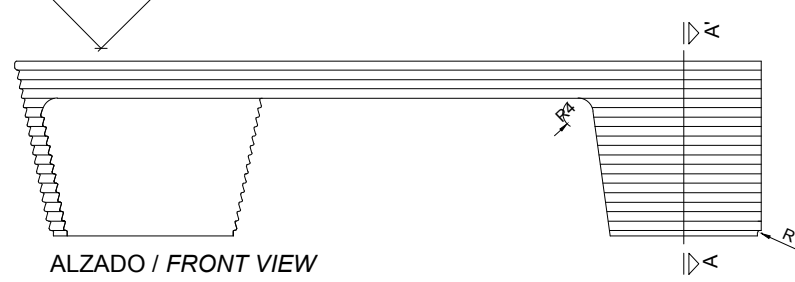
GEOMETRIA / GEOMETRY



VISTA INFERIOR / BOTTOM VIEW



PERFIL / PROFILE

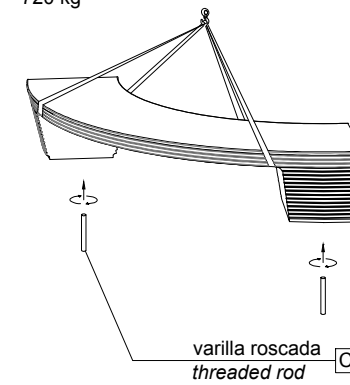


ALZADO / FRONT VIEW

MANIPULACION E INSTALACION / HANDLING AND INSTALLATION

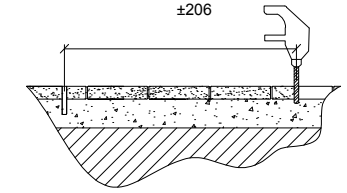
1 Enroscar la varilla / Thread the rod

elevación / hoisting
P= 720 kg

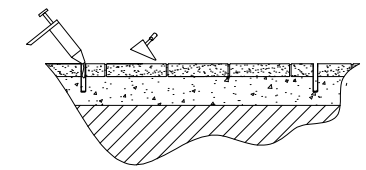


varilla roscada / threaded rod

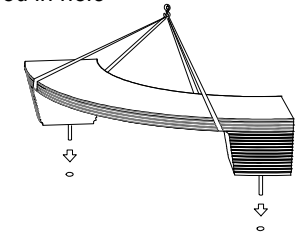
2 Perforar 2 agujeros Ø24 a distancia ±206 cm
Drill 2 holes Ø24 each at a distance ±206 cm



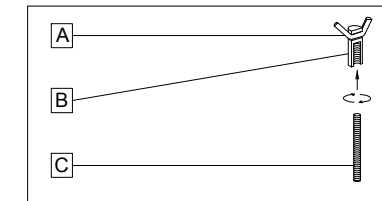
3 Verter resina epoxi / Pour epoxy resin



4 Insertar la varilla en el agujero
Insert metal rod in hole

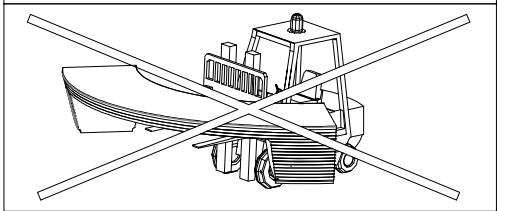


SISTEMA DE FIJACION / ANCHORAGE SYSTEM

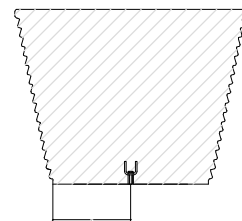


- A barra corrugada / corrugated rod
- B casquillo roscado / threaded sleeve
- C varilla roscada / threaded rod

¡ATENCIÓN! No usar pala elevadora para la manipulación
ATTENTION! Do not use Forklift for handling



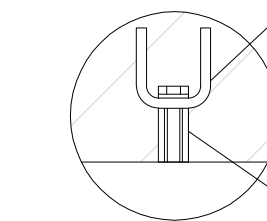
ESPECIFICACIONES / SPECIFICATIONS



SECCION A-A' / SECTION A-A'



SECCION B-B' / SECTION B-B'



DETALLE B / DETAIL B

Barra corrugada acero negro Ø6 - REA6
Corrugated black steel rod Ø6 - REA6

Casquillo M12 - Tubo acero zincado alta precisión
Galvanized steel threaded sleeve M12 high precision