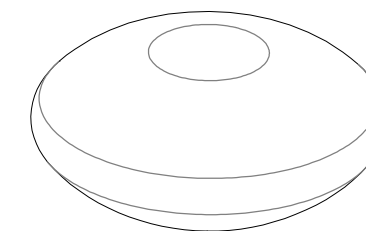


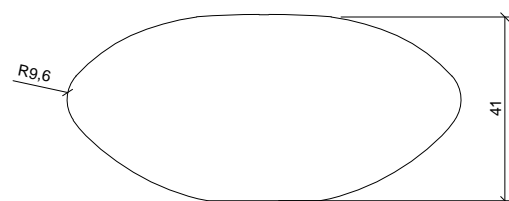
**CARACTERÍSTICAS / FEATURES**

**Material** hormigón Petra 1  
**Acabado** decapado e hidrofugado  
**Dimensiones** Ø88, h. 41 cm  
**Color** ver carta de colores  
**Fijación** mediante varilla metálica  
**Peso** 425 Kg  
**Palet** 200 x 200 x 60cm [4 bancos]  
**Peso bruto** 440 Kg

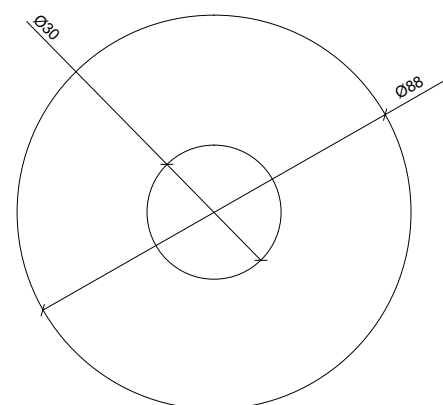
**Material** concrete Petra 1  
**Finish** scaled and waterproofed  
**Dimensions** Ø88, h. 41 cm  
**Colour** see colour catalogue  
**Fixing** anchored with metall rod  
**Weight** 425 Kg  
**Package** 200 x 200 x 60cm [4 benches]  
**Weight package** 440 Kg



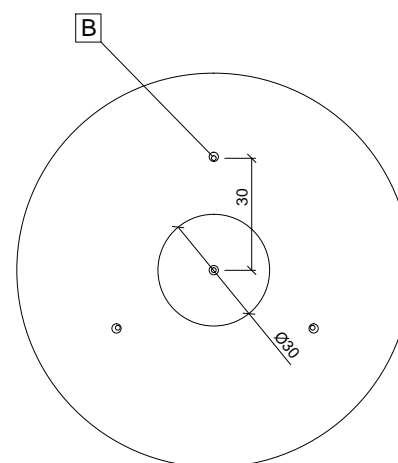
**GEOMETRIA / GEOMETRY**



ALZADO / FRONT VIEW



PLANTA / TOP VIEW

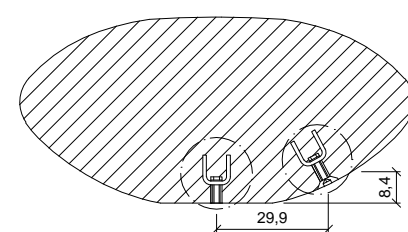


VISTA INFERIOR / BOTTOM VIEW

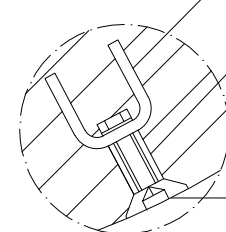
- A barra corrugada / corrugated rod  
casquillo roscado / thread sleeve
- C varilla roscada / thread the rod
- D cáncamo / eyebolt



**ESPECIFICACIONES / SPECIFICATIONS**



SECCIÓN / SECTION

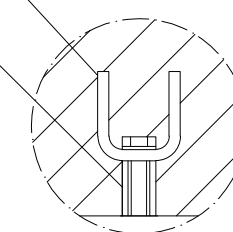


DETALLE 1 / DETAIL 1

Barra corrugada acero negro Ø10 - REA10  
 Corrugated rod black steel Ø10 - REA10

Casquillo M16 - Tubo acero zincado alta precisión  
 Galvanized steel threaded sleeve high precision

Tornillo avellanado M16  
 Countersunk screw M16

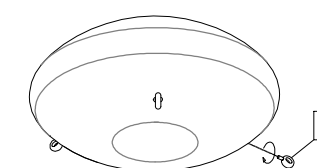


DETALLE 2 / DETAIL 2

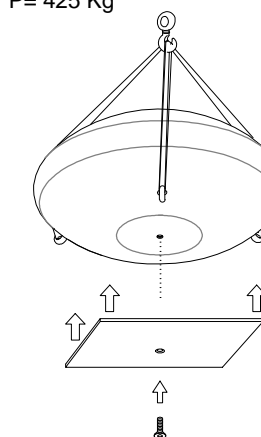
**MANIPULACIÓN E INSTALACIÓN / HANDLING AND INSTALLATION**

1 Enroscar cáncamo  
Thread the eyebolt

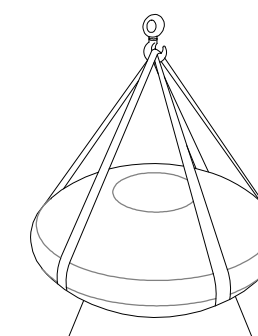
2 Elevar, posicionar chapa de soporte y atornillar.  
Lift and threaded the rod



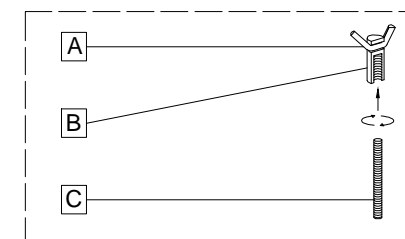
elevación / hoisting  
P= 425 Kg



4 Insertar la varilla en el agujero / Insert metal rod in hole



SISTEMA DE FIJACIÓN / ANCHORAGE SYSTEM



SISTEMA DE ELEVACIÓN / ANCHORAGE SYSTEM

