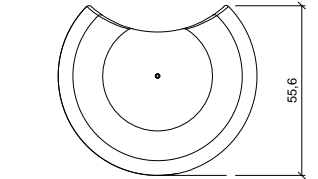
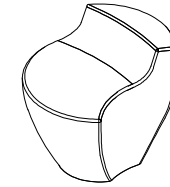


CARACTERISTICAS / FEATURES

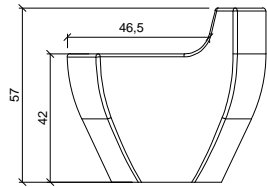
Material hormigón Petra 1
Acabado decapado e hidrofugado
Dimensiones l. 65, a. 55,6, h. 57 cm
Color ver carta de colores
Fijación anclado mediante varilla roscada y resina epoxi
Peso 230 kg
Palet 130 x 105 x 72 cm [4 unidades]
Peso bulto 940 kg

Material precast concrete *petra 1*
Finish *scaled and waterproofed*
Dimensions l. 65, w. 55.6, h. 57 cm
Colour *see colour catalogue*
Fixing *anchored with metal rod and epoxy resin*
Weight 230 kg
Package 130 x 105 x 72cm [4 units]
Weight package 940 kg

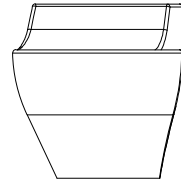
diseñador / design: Foreign Office Architects - Farshid Moussavi & Alejandro Zaera Polo (FOA), special thanks to Kenichi Matsuzawa



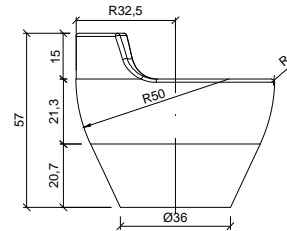
VISTA INFERIOR / BOTTOM VIEW



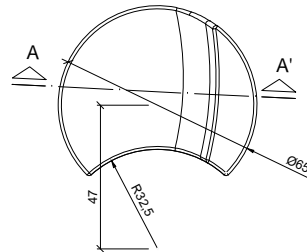
ALZADO / FRONT VIEW



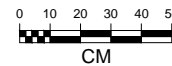
PERFIL / PROFILE



POSTERIOR / BACK VIEW



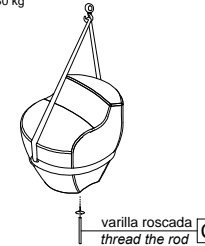
PLANTA / TOP VIEW



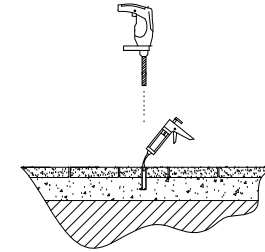
MANIPULACION E INSTALACION / HANDLING AND INSTALLATION

- 1** Enroscar la varilla / Thread the rod

elevación / hoisting
P= 230 kg

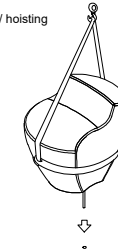


- 3** Perforar agujero y verter resina epoxi
Drill hole and pour epoxy resin

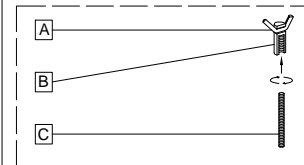


- 4** Insertar la varilla en el agujero
Insert metal rod in hole

elevación / hoisting
P= 230 kg

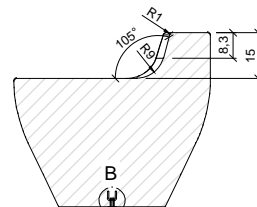


SISTEMA DE FIJACION / ANCHORAGE SYSTEM

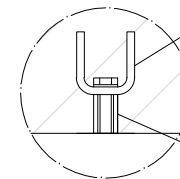


- A** barra corrugada / corrugated rod
- B** casquillo roscado / threaded sleeve
- C** varilla roscada / threaded rod

ESPECIFICACIONES / SPECIFICATIONS



SECCION A-A' - SECTION A-A'



DETALLE B - DETAIL B

Barra corrugada acero negro Ø6
Corrugated black steel rod Ø6 **A**

Tubo M12 acero zincado alta precisión
Galvanized steel threaded sleeve M12 high precision **B**