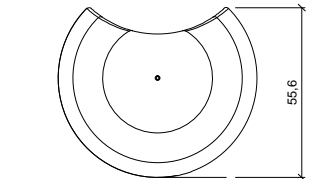
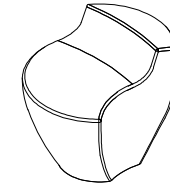


CARACTERÍSTICAS / FEATURES

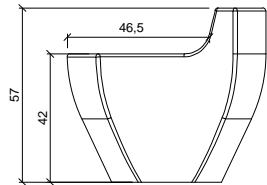
Material hormigón Petra1
Acabado decapado e hidrofugado
Dimensiones l. 65, a. 55.6, h. 57 cm
Color ver carta de colores
Fijación anclado mediante varilla roscada y resina epoxy
Peso 230 Kg
Palet 130 x 105 x 72 cm [4 unidades]
Peso bulto 940 Kg

Material precast concrete *petra 1*
Finish scaled and waterproofed
Dimensions l. 65, w. 55.6, h. 57 cm
Colour see colour catalogue
Fixing anchored with metal rod and epoxy resin
Weight 230 Kg
Package 130 x 105 x 72cm [4 units]
Weight package 940 Kg

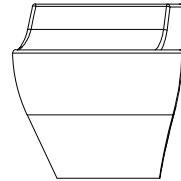
diseñador / design: Foreign Office Architects - Farshid Moussavi & Alejandro Zaera Polo (FOA), special thanks to Kenichi Matsuzawa



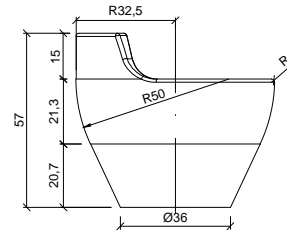
VISTA INFERIOR / BOTTOM VIEW



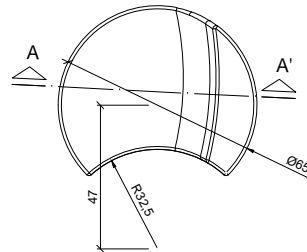
ALZADO / FRONT VIEW



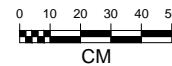
PERFIL / RIGHT SIDE



POSTERIOR / BACK VIEW



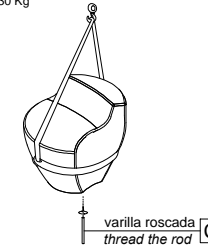
PLANTA / TOP VIEW



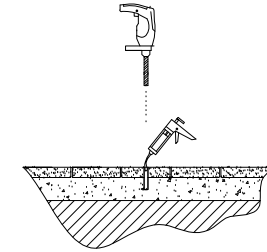
MANIPULACIÓN E INSTALACIÓN / HANDLING AND INSTALLATION

1 enroscar la varilla / thread the rod

elevación / hoisting
P= 230 Kg



3 perforar agujero y verter resina epoxy
drill hole and pour resin epoxy

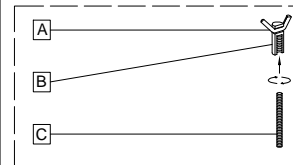


4 insertar la varilla en el agujero
insert metal rod in hole

elevación / hoisting
P= 230 Kg

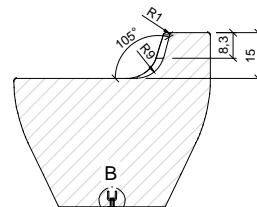


SISTEMA DE FIJACIÓN / ANCHORAGE SYSTEM

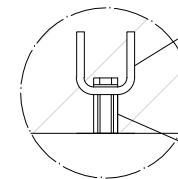


- A** barra corrugada / corrugated rod
- B** casquillo roscado / thread sleeve
- C** varilla roscada / thread the rod

ESPECIFICACIONES / SPECIFICATIONS



SECCIÓN A-A' - SECTION A-A'



DETALLE B - DETAIL B

Barra corrugada acero negro Ø6
Corrugated rod black steel Ø6 **A**

Tubo M12 acero zincado alta precisión
Galvanized steel threaded sleeve M12 high precision **B**