

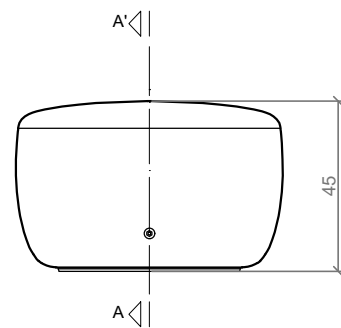
CARACTERISTICAS / FEATURES

**Material** hormigón Petra 1  
**Acabado** decapado e hidrofugado  
**Dimensiones** Ø 71, h. 45 cm  
**Color** ver carta de colores  
**Fijación** apoyado por su propio peso o con resina epoxi  
**Peso** 358 kg  
**Palet** 75 x 75 cm

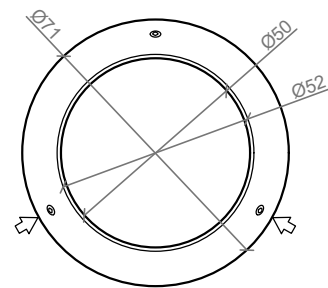
**Material** precast concrete Petra 1  
**Finish** scaled and waterproofed  
**Dimensions** Ø 71, h. 45 cm  
**Colour** see colour catalogue  
**Fixing** resting on the ground or with epoxy resin  
**Weight** 358 kg  
**Pallet** 75 x 75 cm

diseñador / design: kutarq studio + YHY design

GEOMETRIA / GEOMETRY



ALZADO / FRONT VIEW

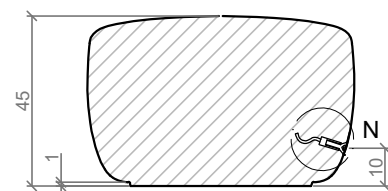


VISTA INFERIOR / BOTTOM VIEW

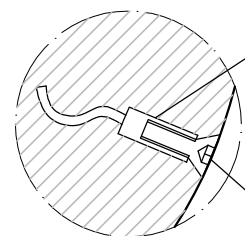
Ubicación del casquillo roscado  
 Location of threaded steel socket

ESC. 1:20

ESPECIFICACIONES / SPECIFICATIONS



SECCION A-A' / SECTION A-A'



DETALLE N / DETAIL N

Casquillo M16 - Tubo acero zincado alta precisión  
 Galvanized steel threaded sleeve M16 high precision

Tornillo avellanado M16  
 Countersunk screw M16