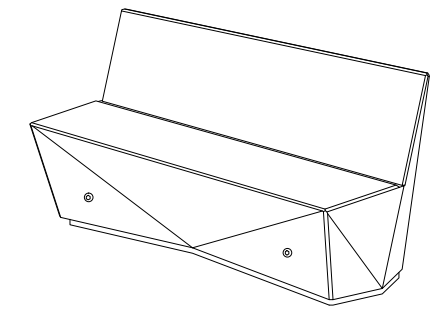
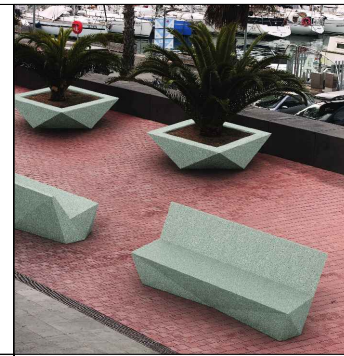


CARACTERÍSTICAS / FEATURES

Material hormigón petra 1
Acabado decapado e hidrofugado
Dimensiones l. 180, a. 65, h. 82 cm.
Color ver carta de colores
Fijación simplemente apoyado o mediante resina epoxy
Peso 870 Kg
Bulto 200 x 80 x 92 cm
Peso bulto 885 Kg

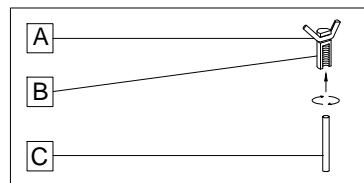
Material precast concrete petra 1
Finish scaled and waterproofed
Dimensions l. 180, w. 65, h. 82 cm
Colour see colour catalogue
Fixing resting on the ground or anchored with epoxy resin
Weight 870 Kg
Package 200 x 80 x 92 cm
Weight package 885 Kg

diseñador / design: Ernest Perera

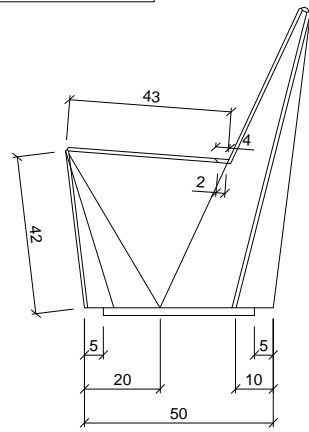


GEOMETRIA / GEOMETRY

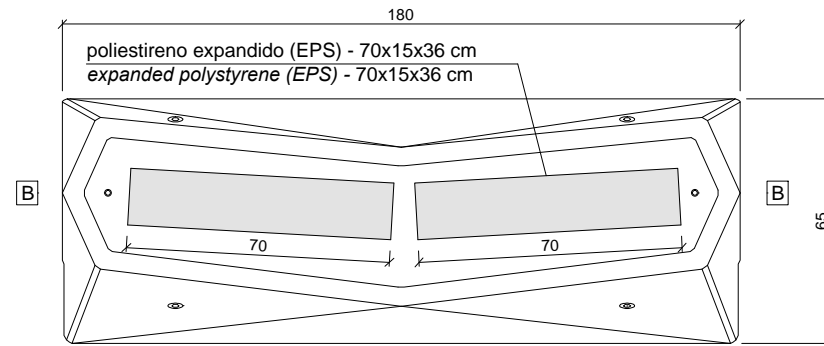
SISTEMA DE FIJACIÓN / ANCHORAGE SYSTEM



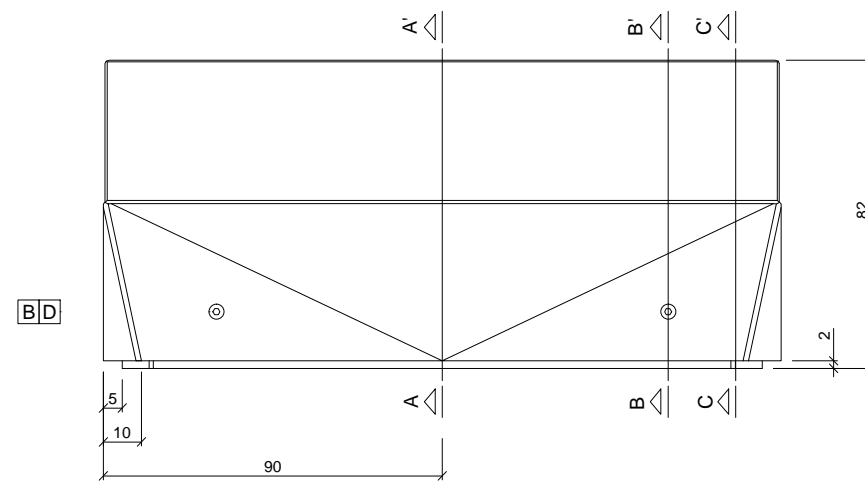
- A barra corrugada / corrugated rod
- B casquillo roscado / thread sleeve
- C varilla roscada / thread the rod



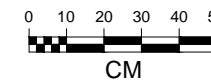
PERFIL / RIGHT SIDE



VISTA INFERIOR / BOTTOM VIEW

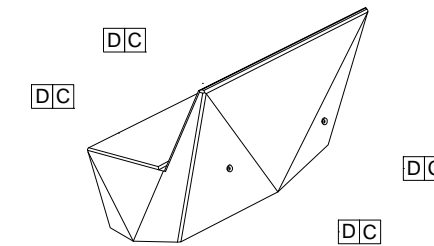


ALZADO / FRONT VIEW

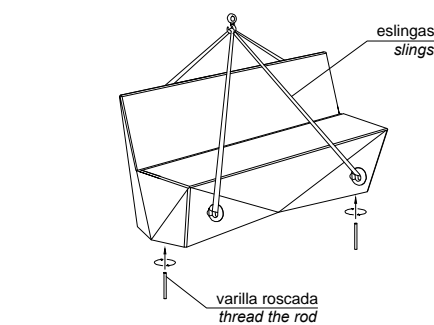


MANIPULACIÓN E INSTALACIÓN / HANDLING AND INSTALLATION

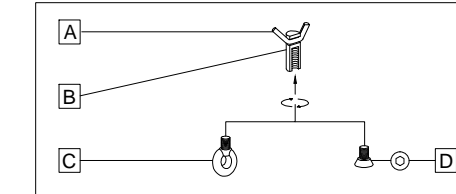
1 extraer tapa, enroscar cáncamo y fijar eslingas. / extract cup, thread the eyebolt and fixing slings.



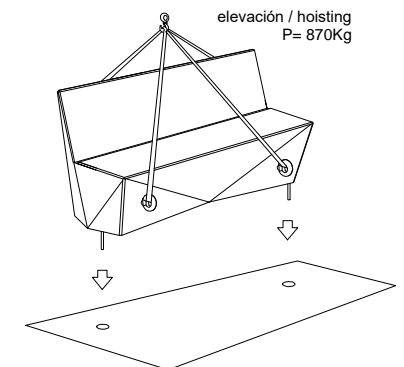
2 enroscar la varilla / thread the rod



SISTEMA DE ELEVACIÓN / ANCHORAGE SYSTEM

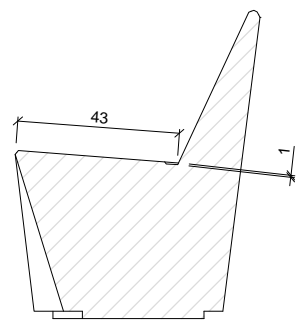


4 elevar e instalar el banco / lift and install bench

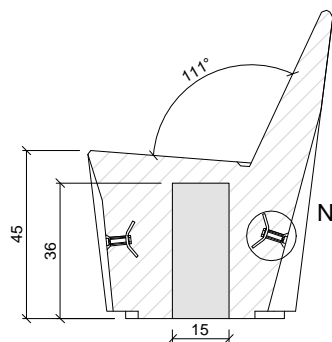


- A barra corrugada / corrugated rod
- B casquillo roscado / thread sleeve
- C cáncamo / eyebolt
- D tapa / cup

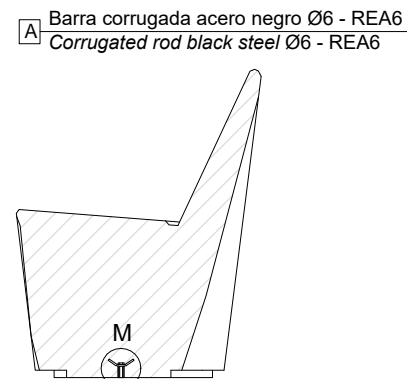
ESPECIFICACIONES / SPECIFICATIONS



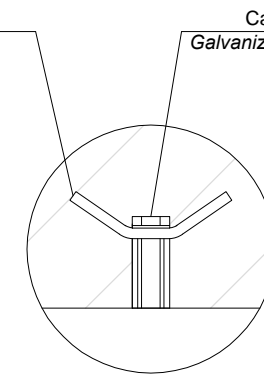
SECCIÓN A-A' / SECTION A-A'



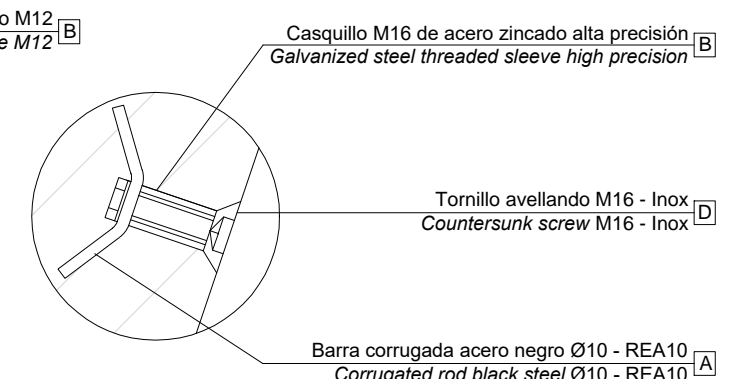
SECCIÓN B-B' / SECTION B-B'



SECCIÓN C-C' / SECTION C-C'



DETALLE M / DETALLE M



DETALLE N / DETALLE N

A Barra corrugada acero negro Ø6 - REA6 / Corrugated rod black steel Ø6 - REA6

B Casquillo de acero zincado M12 / Galvanized steel threaded sleeve M12

Casquillo M16 de acero zincado alta precisión / Galvanized steel threaded sleeve high precision

D Tornillo avellando M16 - Inox / Countersunk screw M16 - Inox

A Barra corrugada acero negro Ø10 - REA10 / Corrugated rod black steel Ø10 - REA10