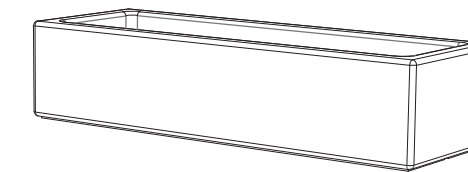


CARACTERISTICAS / FEATURES

Material hormigón Petra 1
Acabado decapado e hidrofugado
Dimensiones l. 200, a. 70, h. 45 cm
Color ver carta de colores
Fijación apoyado por su propio peso o mediante varillas metálicas
Peso 760 kg / 325 L
Palet 200 x 80 x 60 cm

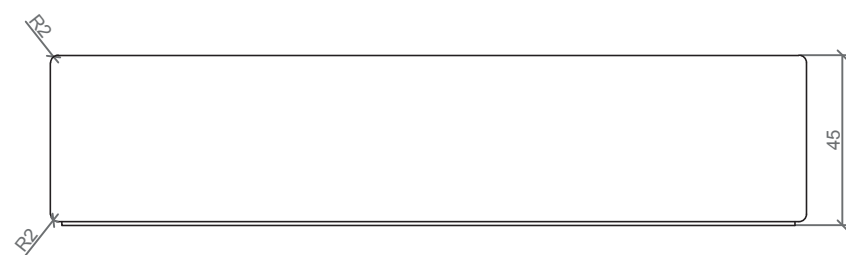
Material precast concrete Petra 1
Finish scaled and waterproofed
Dimensions l. 200, w. 70, h. 45 cm
Colour see colour catalogue
Fixing resting on the ground or anchored with metal rod
Weight 760 kg / 325 L
Pallet 200 x 80 x 60 cm



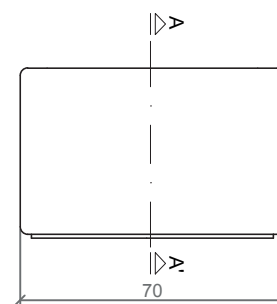
diseñador / design: magourban

ESE

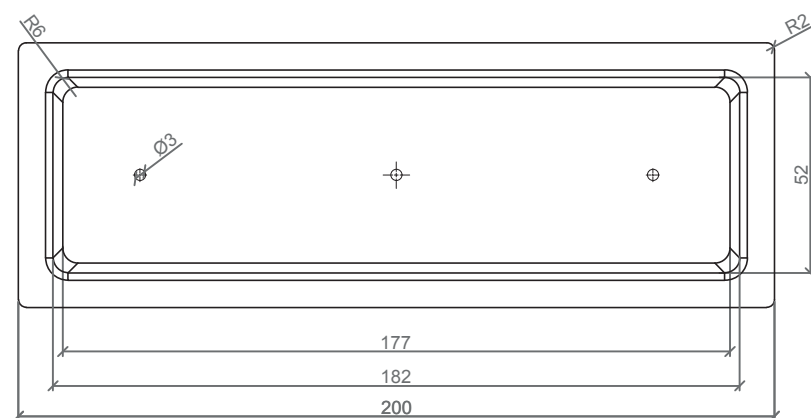
GEOMETRIA / GEOMETRY



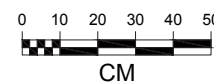
ALZADO / FRONT VIEW



PERFIL / RIGHT SIDE



PLANTA / TOP VIEW

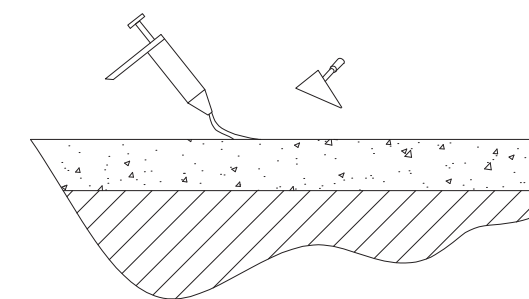


CM

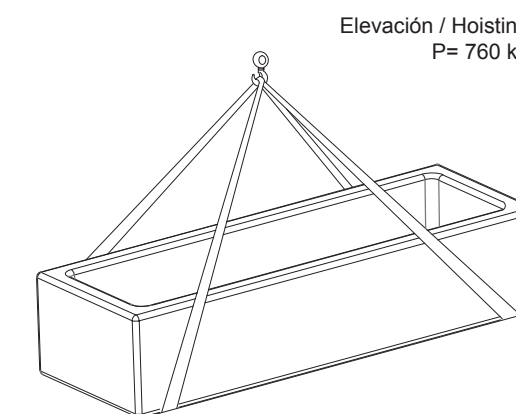
ESC. 1:20

MANIPULACION E INSTALACION / HANDLING AND INSTALLATION

- 1 Verter resina epoxi / pour resin epoxy

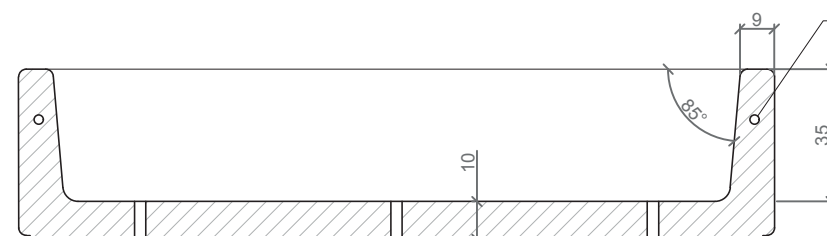


- 2 Elevar mediante eslingas e instalar sobre la resina epoxi
lifting with slings and install over resin epoxy



Elevación / Hoisting
P= 760 kg

ESPECIFICACIONES / SPECIFICATIONS



Armadura de Acero galvanizado
u opción de acero inoxidable Ø2,5

SECCION A-A' / SECTION A-A'

ESC. 1:20