

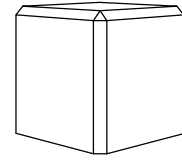
CARACTERÍSTICAS / FEATURES

128

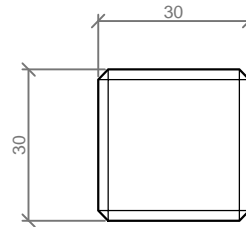
Material / Material
Acabado / Finish
Dimensiones / Dimensions
Color / Colour
Fijación / Fixing
Peso / Weight
Palet / Pallet
Peso palet / Weight pallet

Hormigón Petra 2 / *Concrete Petra 2*
hidrofugado / waterproofed
l.30, a.30, h.30 cm
ver carta de colores / *see colour catalogue*
con varilla metálica y resina epoxy / with metal rod and epoxy resin
65 Kg
100x100x80h cm (18 unidades / 18 units)
1170 Kg

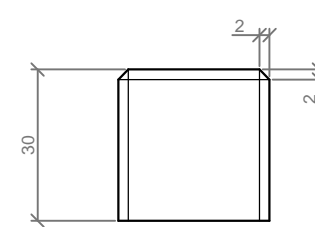
3D



GEOMETRÍA / GEOMETRY



PLANTA / TOP VIEW

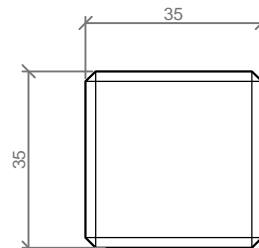
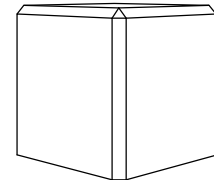


ALZADO / FRONT VIEW

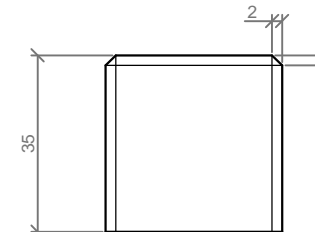
129

Material / Material
Acabado / Finish
Dimensiones / Dimensions
Color / Colour
Fijación / Fixing
Peso / Weight
Palet / Pallet
Peso palet / Weight pallet

Hormigón Petra 2 / *Concrete Petra 2*
hidrofugado / waterproofed
l.35, a.35, h.35 cm
ver carta de colores / *see colour catalogue*
con varilla metálica y resina epoxy / with metal rod and epoxy resin
102 Kg
120x80x90h cm (12 unidades / 12 units)
1250 Kg



PLANTA / TOP VIEW

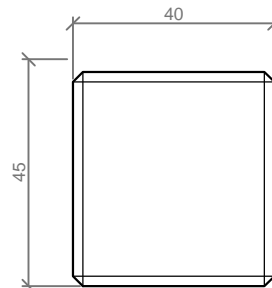
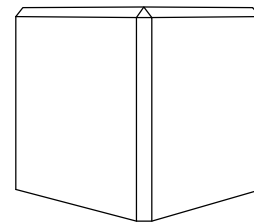


ALZADO / FRONT VIEW

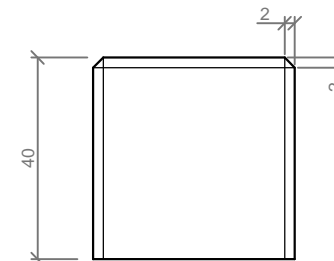
130

Material / Material
Acabado / Finish
Dimensiones / Dimensions
Color / Colour
Fijación / Fixing
Peso / Weight
Palet / Pallet
Peso palet / Weight pallet

Hormigón Petra 2 / *Concrete Petra 2*
hidrofugado / waterproofed
l.40, a.40, h.40 cm
ver carta de colores / *see colour catalogue*
con varilla metálica y resina epoxy / with metal rod and epoxy resin
152 Kg
100x100x80h cm (4 unidades / 4 units)
630 Kg



PLANTA / TOP VIEW

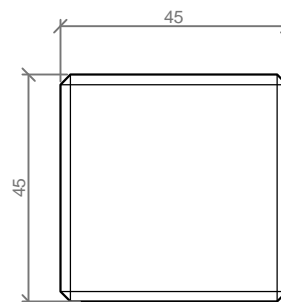
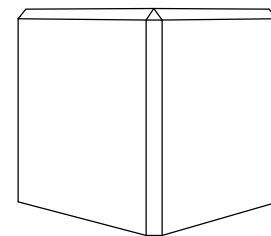


ALZADO / FRONT VIEW

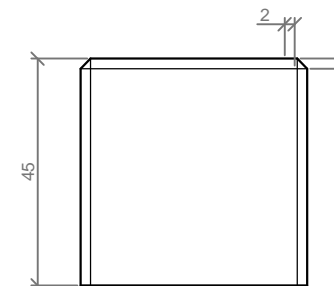
131

Material / Material
Acabado / Finish
Dimensiones / Dimensions
Color / Colour
Fijación / Fixing
Peso / Weight
Palet / Pallet
Peso palet / Weight pallet

Hormigón Petra 2 / *Concrete Petra 2*
hidrofugado / waterproofed
l.45, a.45, h.45 cm
ver carta de colores / *see colour catalogue*
con varilla metálica y resina epoxy / with metal rod and epoxy resin
219 Kg
100x100x60h cm (4 unidades / 4 units)
900 Kg



PLANTA / TOP VIEW



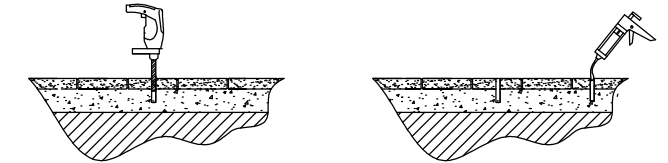
ALZADO / FRONT VIEW

ESCALA / SCALE: 1/15

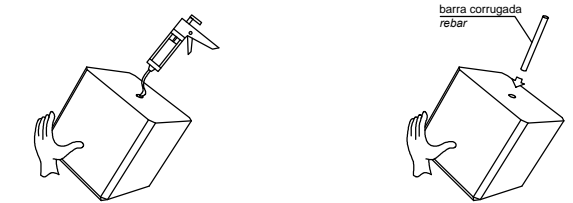


**MANIPULACIÓN E INSTALACIÓN
HANDLING AND INSTALLATION**

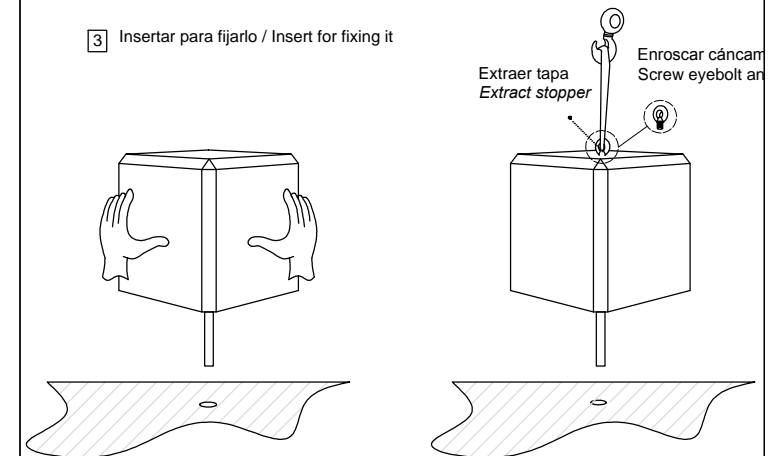
1 Perforar agujero Ø25mm x 30 cm y verter resina epoxy dentro del agujero
Drill hole Ø25mm x 30 cm and pour resin epoxy inside hole



2 Elevar y fijar la varilla con resina epoxy.
Lift and fixed the rod with epoxy resin



3 Insertar para fijarlo / Insert for fixing it



ATENCIÓN / ATTENTION

Límite / Limit 128 (65 Kg)
Límite / Limit 129 (102 Kg)

**MANIPULACIÓN MANUAL
MANUAL HANDLING**

ATENCIÓN / ATTENTION

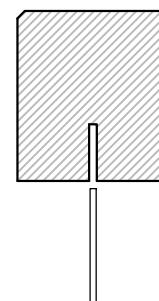
Límite / Limit 130 (152 Kg)
Límite / Limit 131 (219 Kg)

**MANIPULACIÓN MECÁNICA
MECHANICAL HANDLING**

*Ver detalle N / *See detail N*

ESPECIFICACIONES / SPECIFICATIONS

*Todos los elementos se fijan al suelo con varilla metálica y resina epoxy. **Ver detalle M**
All the elements are fixed to the floor with metal rod and epoxy resin. **See detail M**

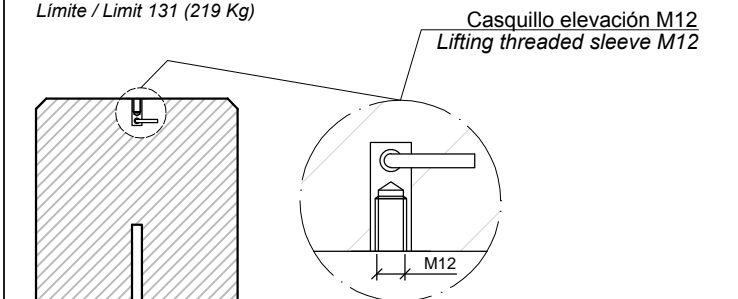


Detalle M / *Detail M*

ESCALA / SCALE: 1/20

ESPECIFICACIONES / SPECIFICATIONS

Límite / Limit 130 (152 Kg)
Límite / Limit 131 (219 Kg)



Detalle N / *Detail N*