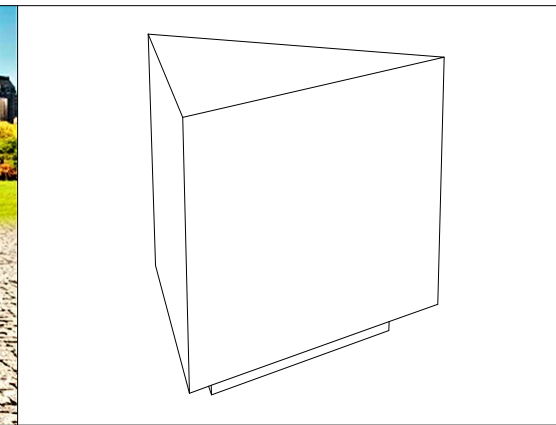


CARACTERISTICAS / FEATURES

Material hormigón Petra 1
Acabado decapado e hidrofugado
Dimensiones a. 50, b. 50, c. 50, h. 45 cm
Color ver carta de colores
Fijación apoyado por su propio peso o con varilla metálica
Peso 317 kg
Palet 120 x 80 cm (2 unidades)

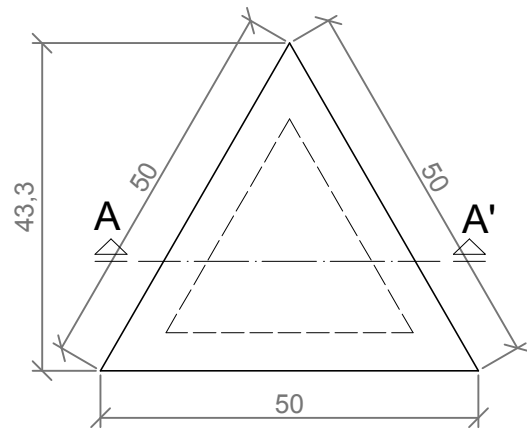
Material precast concrete Petra 1
Finish scaled and waterproofed
Dimensions a.50, b.50, c.50, h. 45 cm
Colour see colour catalogue
Fixing resting on the ground or with metal rod
Weight 317 kg
Pallet 120 x 80 cm (2 units)



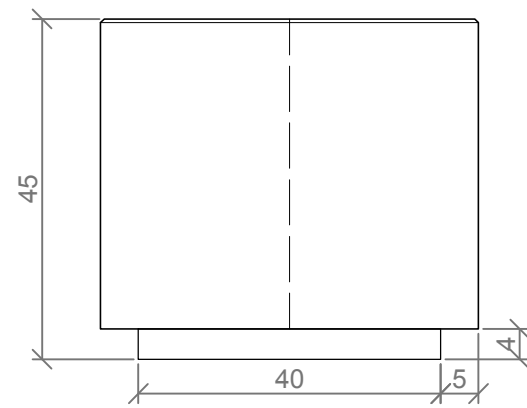
DYNAMIC TR-50

diseñador / design: magourban

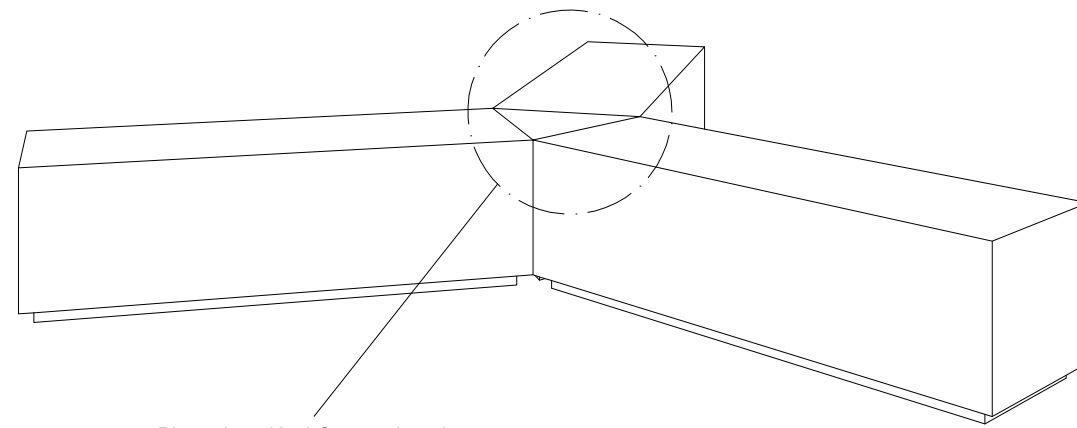
GEOMETRIA / GEOMETRY



PLANTA / TOP VIEW



ALZADO / FRONT VIEW

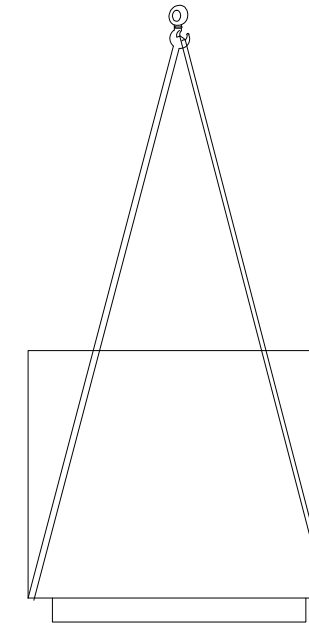


Pieza de unión / Connecting piece

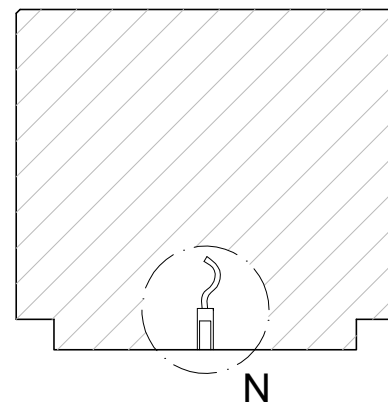
ESC.: 1/10

MANIPULACION E INSTALACION / HANDLING AND INSTALLATION

Elevación / Hoisting
 P= 317 kg

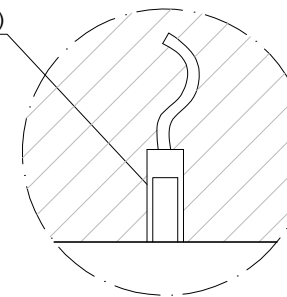


ESPECIFICACIONES / SPECIFICATIONS



SECCION A-A' / SECTION A-A'

Poliestireno expandido (EPS)
 Expanded polystyrene (EPS)



DETALLE N / DETAIL N

ESC.: 1/10