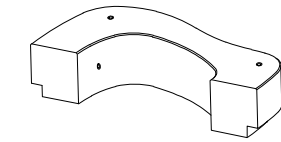


## CARACTERISTICAS / FEATURES

<b>Material</b>	hormigón petra 1
<b>Acabado</b>	decapado e hidrofugado
<b>Dimensiones</b>	l. 159, a. 80, h. 45 cm
<b>Color</b>	ver carta de colores
<b>Fijación</b>	simplemente apoyado o mediante resina epoxi
<b>Peso</b>	685 kg
<b>Bulto</b>	159 x 80 x 60 cm
<b>Peso bulto</b>	700 kg

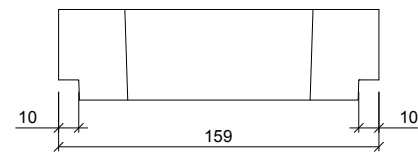
<b>Material</b>	precast concrete preta 1
<b>Finish</b>	scaled and waterproofed
<b>Dimensions</b>	l. 159, w. 80, h. 45 cm
<b>Colour</b>	see colour catalogue
<b>Fixing</b>	resting on the ground or anchored with epoxy resin
<b>Weight</b>	685 kg
<b>Package</b>	159 x 80 x 60 cm
<b>Weight package</b>	700 kg

diseñador / design: Roger Albero

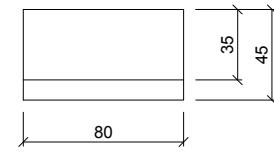


## GEOMETRIA / GEOMETRY

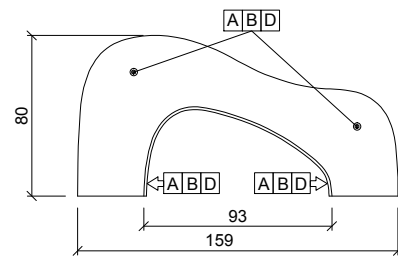
0 10 20 30 40 50  
CM



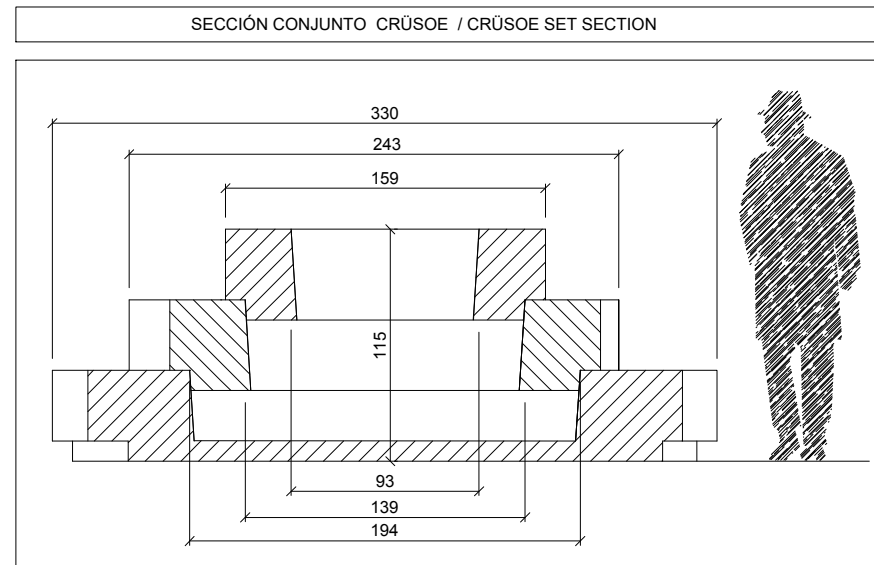
ALZADO / FRONT VIEW



PERFIL / PROFIL VIEW



PLANTA / TOP VIEW

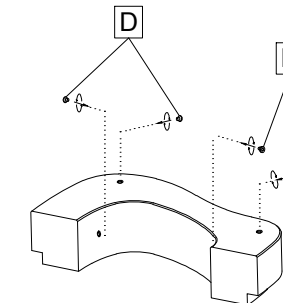


SECCIÓN CONJUNTO CRUSOE / CRUSOE SET SECTION

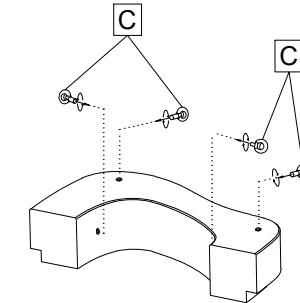
↑ ubicación del casquillo roscado  
location of threaded steel sleeve

## MANIPULACION E INSTALACION / HANDLING AND INSTALLATION

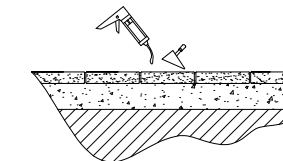
1 Extraer tapa / Extract stopper



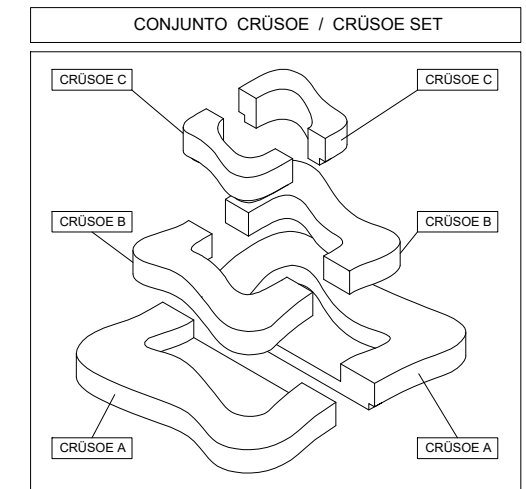
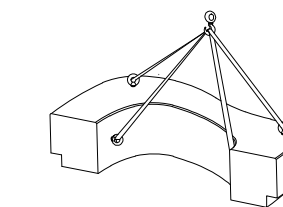
2 Enroscar cáncamo / Thread the eyebolt



3 Verter resina epoxi / Pour epoxy resin



4 Elevar e instalar / Lift and install



Se suministra instrucciones de montaje para el conjunto Crúsoe  
Assembly instructions are supplied for Crúsoe set assembly

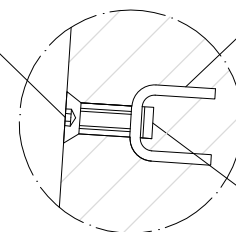
## ESPECIFICACIONES / SPECIFICATIONS



SECCION / SECTION

D Tornillo avellanado M16  
Countersunk screw M16

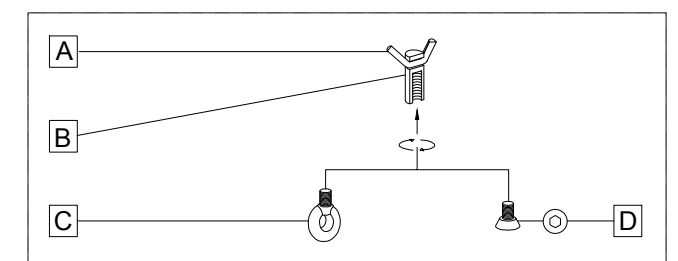
A Barra corrugada acero negro Ø10  
Corrugated black steel rod Ø10



DETALLE M / DETAIL M

B Casquillo M16 - Tubo acero zincado alta precisión  
Galvanized steel threaded sleeve M16 high precision

## SISTEMA DE ELEVACION / LIFTING SYSTEM



A barra corrugada / corrugated rod C cáncamo / eyebolt

B casquillo roscado / threaded sleeve D tapa / stopper