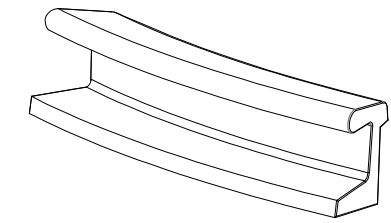


CARACTERISTICAS / FEATURES

Material hormigón petra 1
Acabado decapado e hidrofugado
Dimensiones l. 163.9, a.44,4, h. 49,6 cm
Color ver carta de colores
Fijación simplemente apoyado o mediante varillas metálicas
Peso 380 kg
Bulto 180 x 50 x 65 cm
Peso bulto 395 kg

Material concrete petra 1
Finish scaled and waterproofed
Dimensions l. 163.9, w. 44.4, h. 49.6 cm
Colour see colour catalogue
Fixing resting on the ground or anchored with metal rod
Weight 380 kg
Package 180 x 50 x 65 cm
Weight package 395 kg

diseñador / design: EMBT, Benedetta Tagliabue

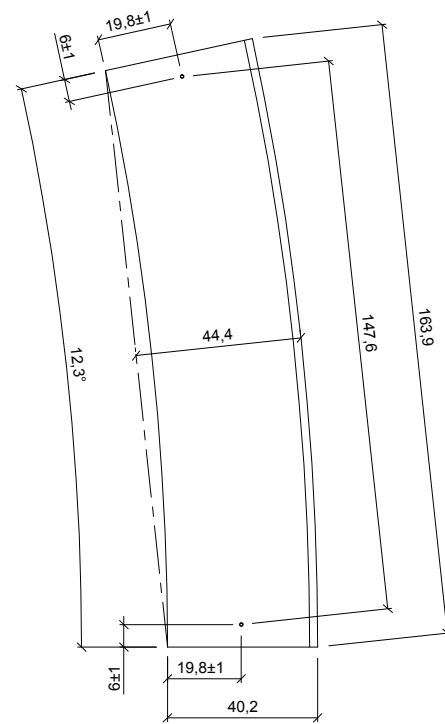
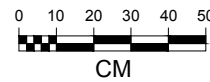


VINYES R726

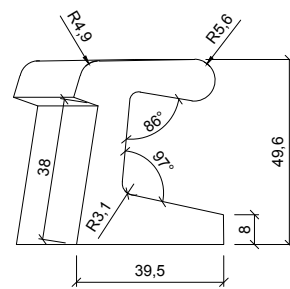
Tàrraga, Lleida - Tel. +34 973 15 87 03 - www.magourban.com - info@magourban.com

magourban

GEOMETRIA / GEOMETRY

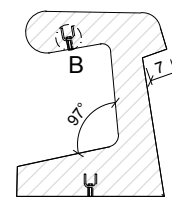


VISTA INFERIOR / BOTTOM VIEW

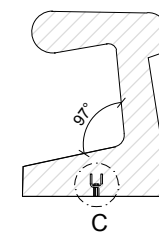


ALZADO / FRONT VIEW

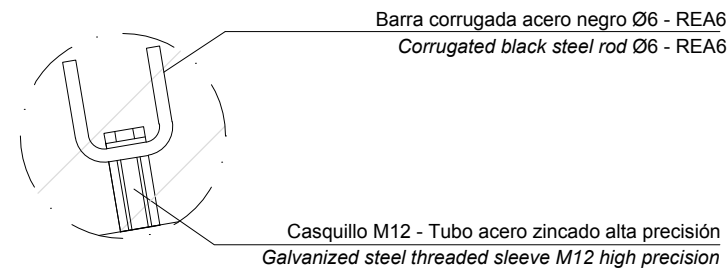
ESPECIFICACIONES / SPECIFICATIONS



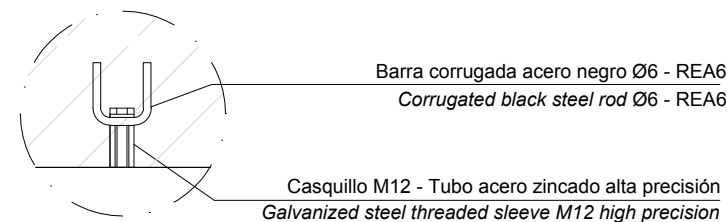
SECCION 1 / SECTION 1



SECCION 2 / SECTION 2



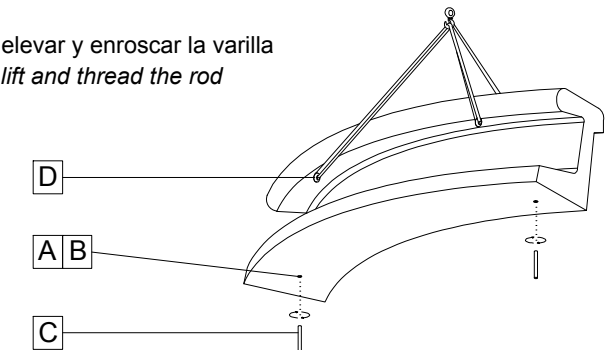
DETALLE B / DETAIL B
[ELEVACION / HOISTING]



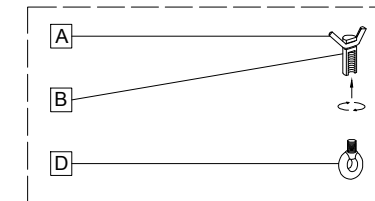
DETALLE C / DETAIL C
[ANCLAJE / ANCHORAGE]

MANIPULACION E INSTALACION / HANDLING AND INSTALLATION

- 1 Enroscar cáncamo, elevar y enroscar la varilla
Thread the eyebolt, lift and thread the rod
elevación / hoisting
P= 380 kg

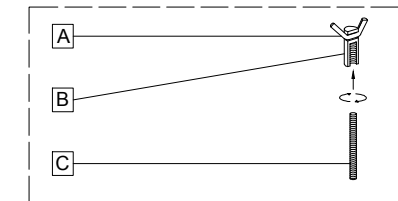


SISTEMA DE ELEVACION / ANCHORAGE SYSTEM



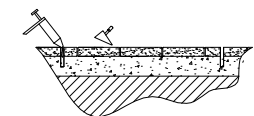
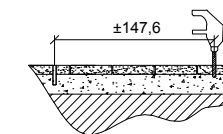
- A barra corrugada / corrugated rod
- B casquillo roscado / threaded sleeve
- D cáncamo / eyebolt

SISTEMA DE FIJACION / LIFTING SYSTEM



- A barra corrugada / corrugated rod
- B casquillo roscado / threaded sleeve
- C varilla roscada / threaded rod

- 2 Perforar 2 agujeros a distancia ± 147,6 cm
Drill 2 holes each at a distance ± 147.6 cm
- 3 Verter resina epoxi / Pour epoxy resin



- 4 Insertar la varilla en el agujero
Insert metal rod in hole

