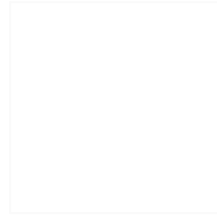


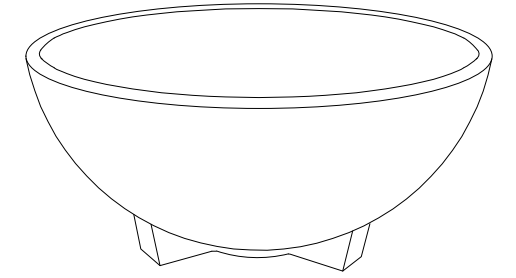
CARACTERISTICAS / FEATURES



Material hormigón Petra 1
Acabado decapado e hidrofugado
Dimensiones Ø 118, h. 45 cm
Color ver carta de colores
Fijación apoyado por su propio peso
Peso 180 kg / 262 L
Palet 120 x 120 cm

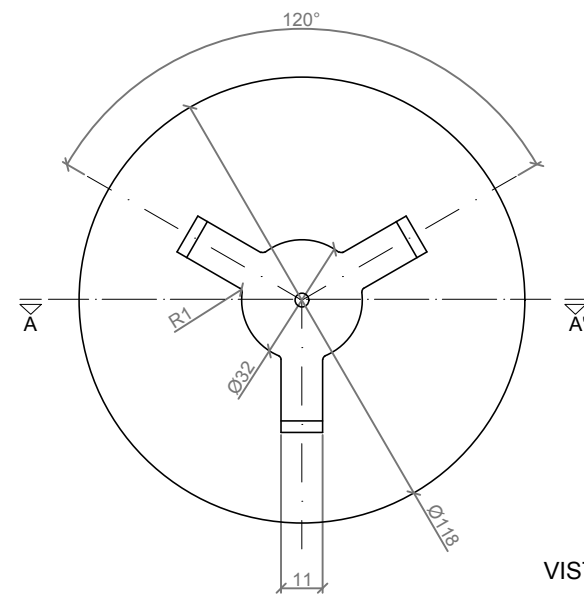
Material precast concrete Petra 1
Finish scaled and waterproofed
Dimensions Ø 118, h. 45 cm
Colour see colour catalogue
Fixing resting on the ground
Weight 180 kg / 262 L
Pallet 120 x 120 cm

diseñador / design: magourban

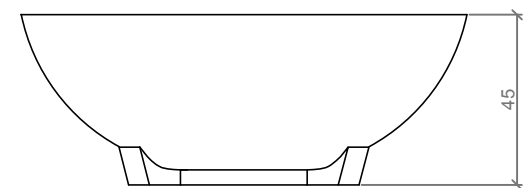


BOL

GEOMETRIA / GEOMETRY



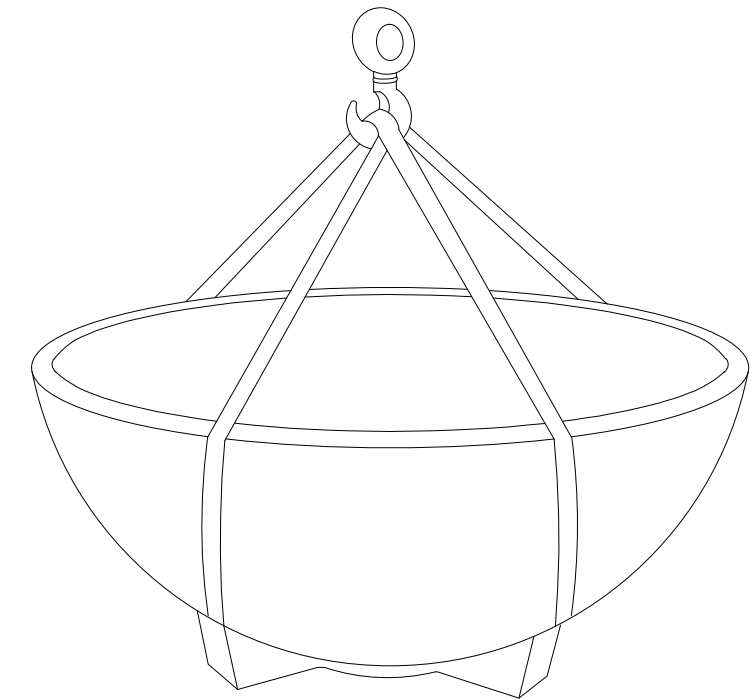
VISTA INFERIOR / BOTTOM VIEW



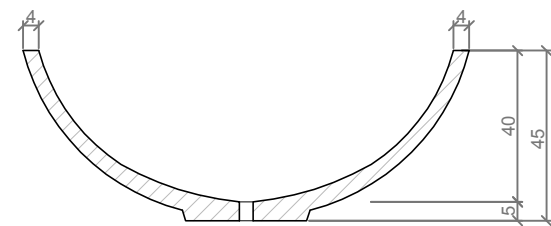
ALZADO / FRONT VIEW

MANIPULACION E INSTALACION / HANDLING AND INSTALLATION

Elevación / Hoisting
 P= 180 kg



ESPECIFICACIONES / SPECIFICATIONS



SECCION A-A' / SECTION A-A'