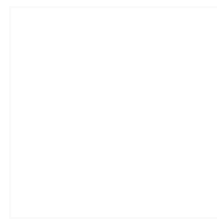


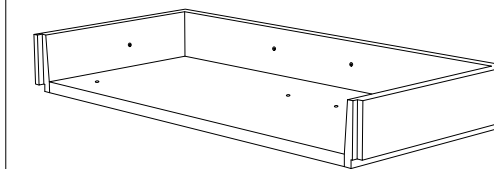
CARACTERISTICAS / FEATURES



**Material** hormigón Petra 1  
**Acabado** decapado e hidrofugado  
**Dimensiones** l. 300, a. 140, h. 40 cm  
**Color** ver carta de colores  
**Fijación** apoyado por su propio peso o mediante resina epoxi  
**Peso** 1200 kg  
**Palet** 310 x 150 cm

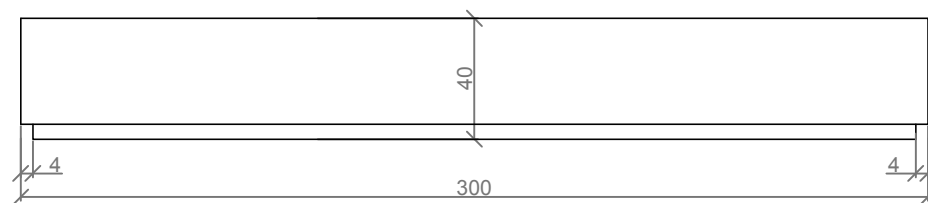
**Material** precast concrete Petra 1  
**Finish** scaled and waterproofed  
**Dimensions** l. 300, w. 140, h. 40 cm  
**Colour** see colour catalogue  
**Fixing** resting on the ground or with epoxy resin  
**Weight** 1200 kg  
**Pallet** 310 x 150 cm

diseñador / design: magourban

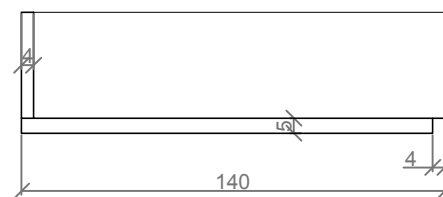


ESPACE G

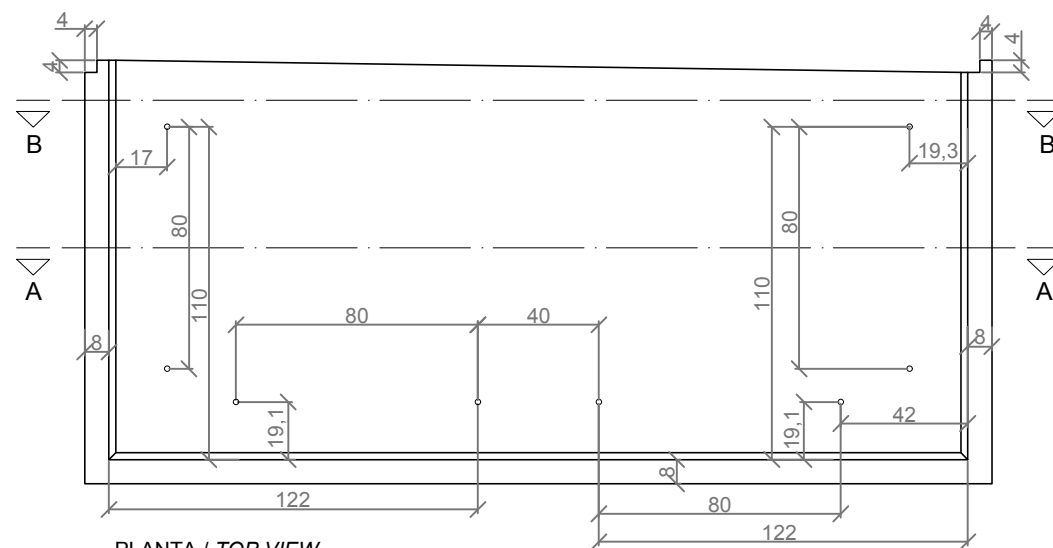
GEOMETRIA / GEOMETRY



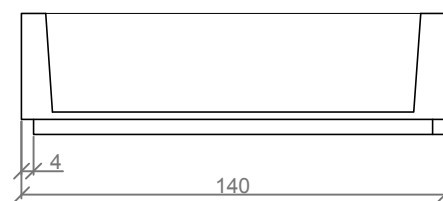
ALZADO / FRONT VIEW



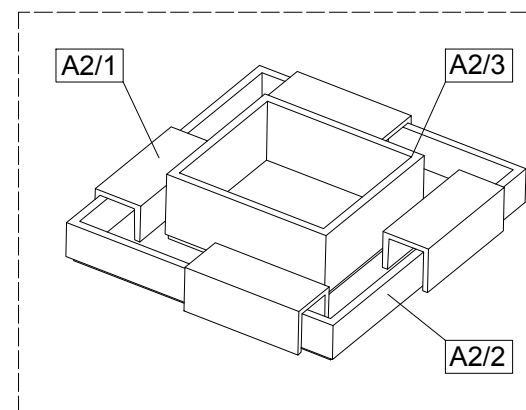
PERFIL 1 / PROFILE VIEW 1



PLANTA / TOP VIEW



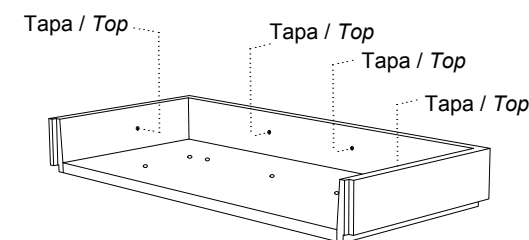
PERFIL 2 / PROFILE VIEW 2



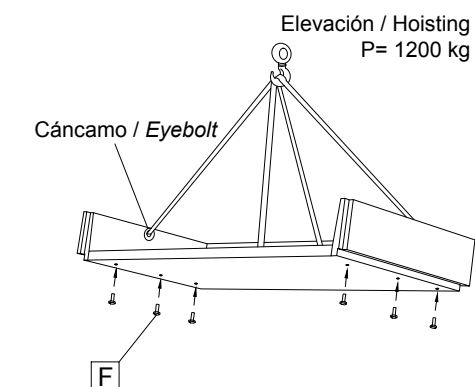
ESC. 1:25

MANIPULACION E INSTALACION / HANDLING AND INSTALLATION

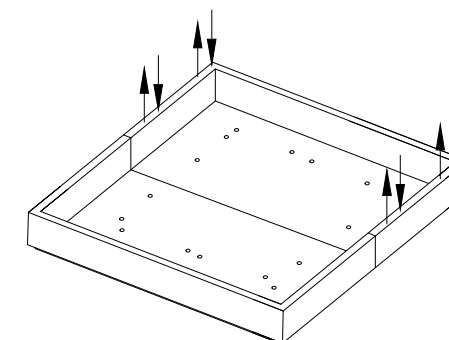
- 1 Extraer tapa y enroscar cáncamo  
Remove cap and screw eyebolt



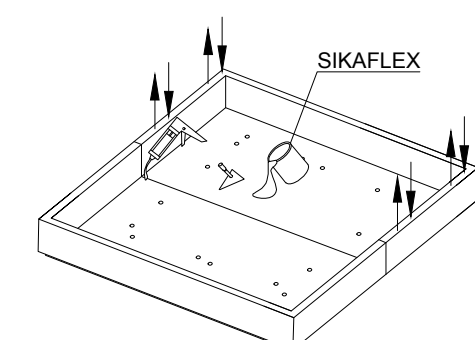
- 2 Elevar y enroscar la niveladora  
Raise and screw the level



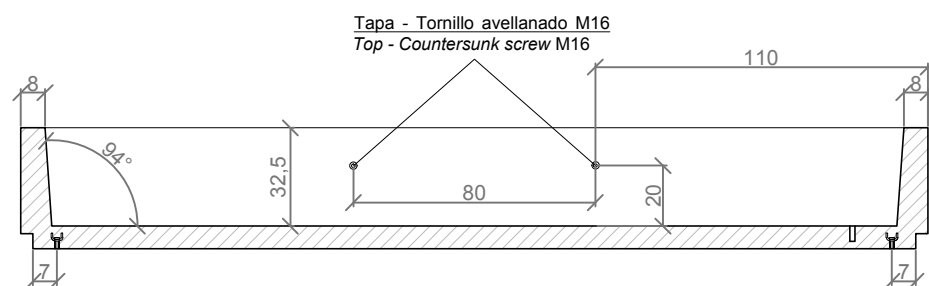
- 3 Instalar y nivelar hasta ajustar la altura  
Install and level up to adjust the height



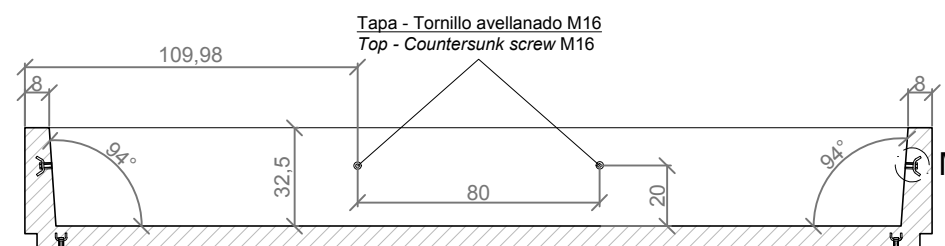
- 4 Sellar las juntas y verter Sikaflex en el interior  
Seal the joints and pour Sikaflex inside



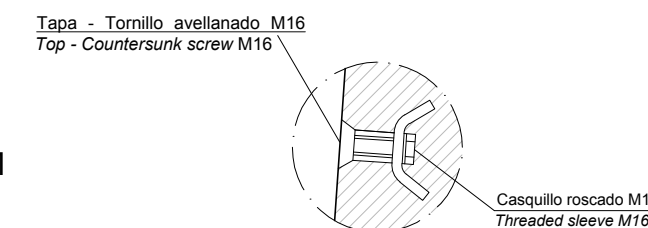
ESPECIFICACIONES / SPECIFICATIONS



SECCION A-A' / SECTION A-A'



SECCION B-B' / SECTION B-B'



DETALLE M / DETAIL M

ESC. 1:25