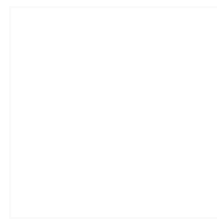


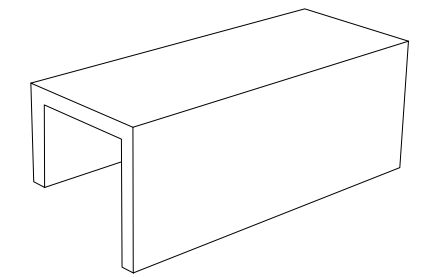
CARACTERISTICAS / FEATURES



Material hormigón Petra 1
Acabado decapado e hidrofugado
Dimensiones l. 120, a. 47, h. 45 cm
Color ver carta de colores
Fijación por su propio peso o mediante resina epoxi
Peso 160 kg
Palet 120 x 100 cm

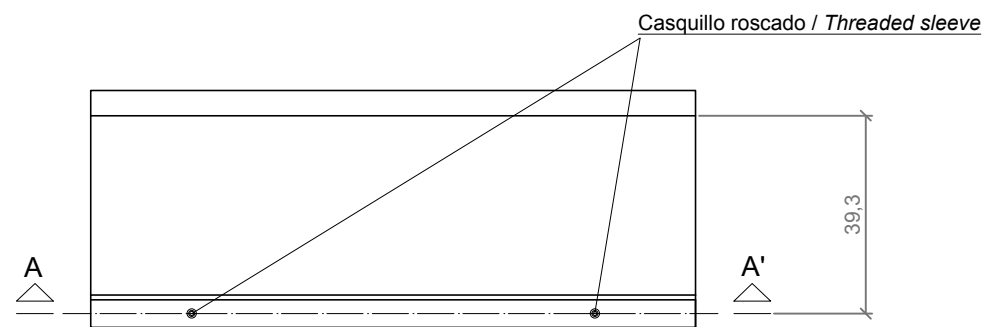
Material precast concrete Petra 1
Finish scaled and waterproofed
Dimensions l. 120, w. 47, h. 45 cm
Colour see colour catalogue
Fixing resting on the ground or with epoxy resin
Weight 160 kg
Pallet 120 x 100 cm

diseñador / design: magourban

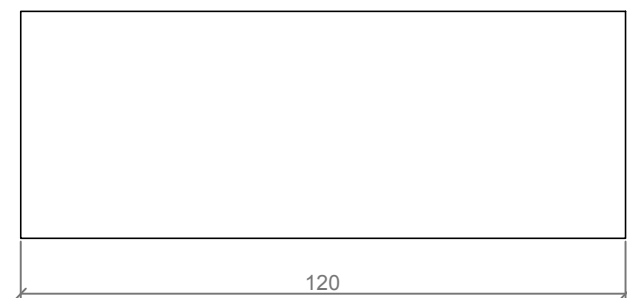
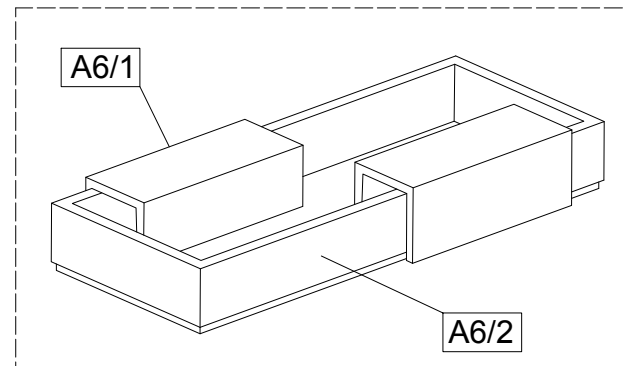


ESPAC B

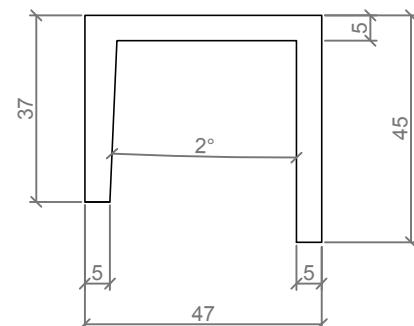
GEOMETRIA / GEOMETRY



PLANTA INFERIOR / BOTTOM VIEW



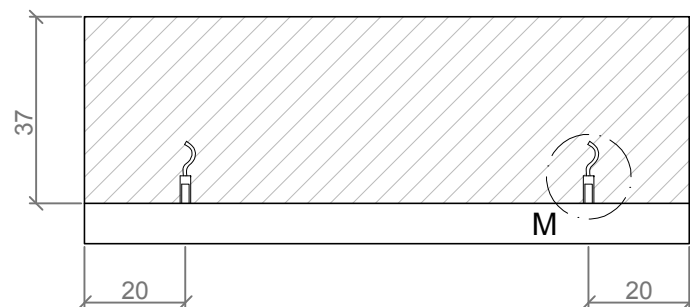
ALZADO / FRONT VIEW



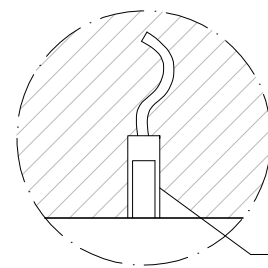
PERFIL / PROFILE VIEW

ESC. 1:15

ESPECIFICACIONES / SPECIFICATIONS



SECCION A-A' / SECTION A-A'



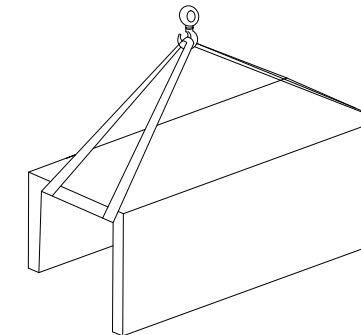
Casquillo roscado M12
Threaded sleeve M12

DETALLE M / DETAIL M

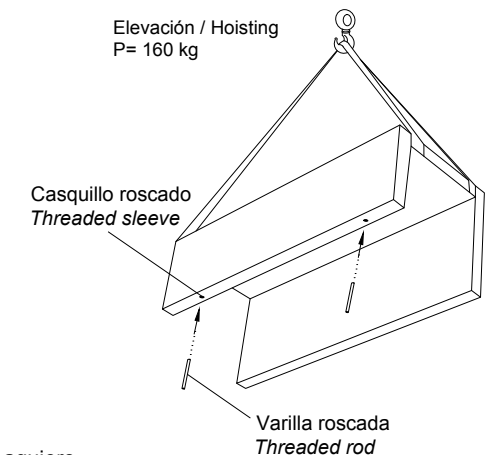
ESC. 1:15

MANIPULACION E INSTALACION / HANDLING AND INSTALLATION

1 Elevar mediante eslingas
Lifting with slings



2 Elevar y enroscar la varilla roscada
Lift and thread the rods



3 Verter resina epoxi e insertar la varilla en el agujero
Pour resin epoxy and insert the rod into the hole

