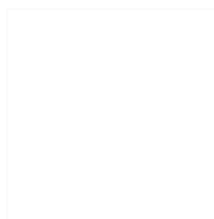


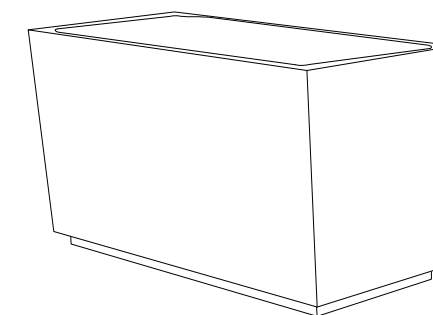
CARACTERISTICAS / FEATURES



Material hormigón Petra 1
Acabado decapado e hidrofugado
Dimensiones l. 120, a. 60, h. 60 cm
Color ver carta de colores
Fijación apoyado por su propio peso o mediante resina epoxi
Peso 280 kg / 265 L
Palet 125 x 65 cm

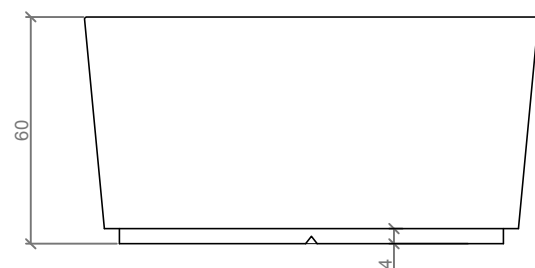
Material precast concrete Petra 1
Finish scaled and waterproofed
Dimensions l. 120, w. 60, h. 60 cm
Colour see colour catalogue
Fixing resting on the ground or with epoxy resin
Weight 280 kg / 265 L
Pallet 125 x 65 cm

diseñador / design: magourban

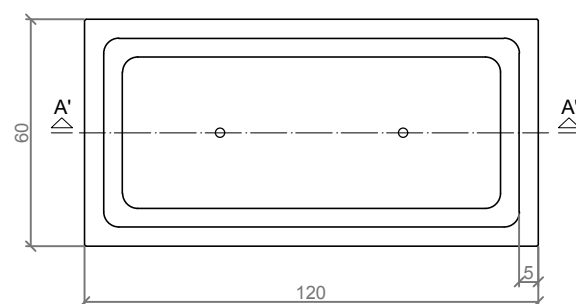


KONIQ JR-120

GEOMETRIA / GEOMETRY



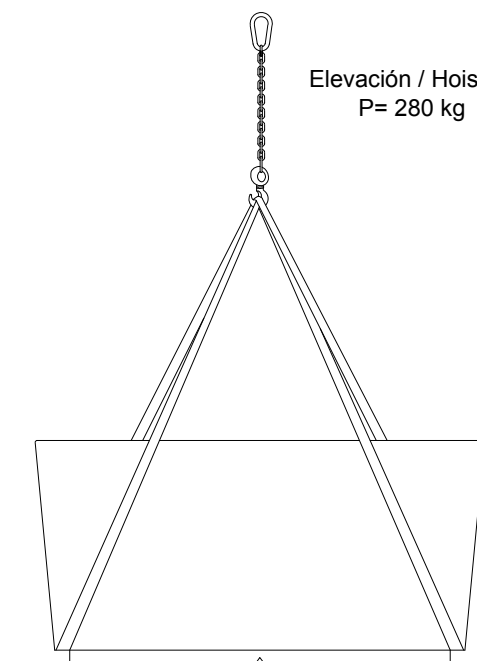
ALZADO / FRONT VIEW



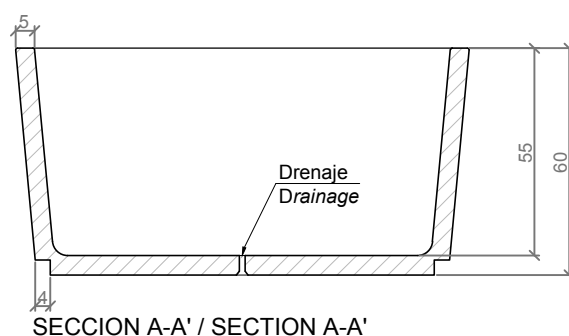
VISTA INFERIOR / BOTTOM VIEW

MANIPULACION E INSTALACION / HANDLING AND INSTALLATION

1 Elevar con eslingas e instalar / Raise with slings and install.



ESPECIFICACIONES / SPECIFICATIONS



SECCION A-A' / SECTION A-A'

Casquillo M12 - tubo acero zincado alta precisión
 Tube M12 - galvanized steel pipe high precision