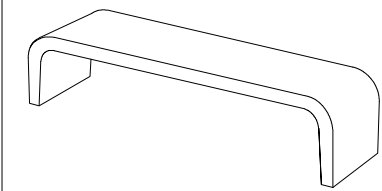


## CARACTERÍSTICAS / FEATURES

**Material** hormigón petra 1  
**Acabado** decapado e hidrofugado  
**Dimensiones** l. 183,50, a. 45, h. 45 cm.  
**Color** ver carta de colores  
**Fijación** simplemente apoyado mediante resina epoxi (OPCIONAL con casquillos y varilla metálica)  
**Peso** 214 Kg  
**Palet** 200 x 50 cm (1 unidad, no remontable)  
 210 x 70 cm (2 unidades, no remontable)  
 210 x 150 cm (4 unidades, remontable)  
 Paletización de costado

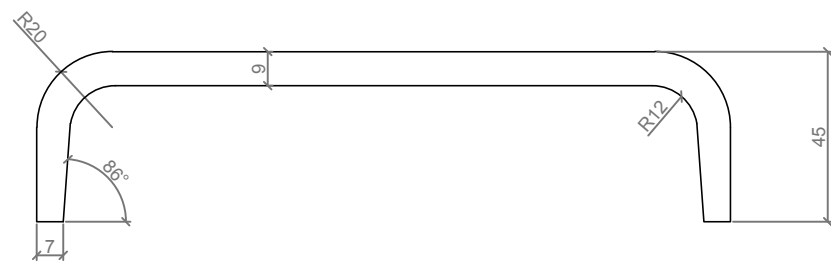
**Material** precast concrete petra 1  
**Finish** scaled and waterproofed  
**Dimensions** l. 183,50, a. 45, h. 45 cm.  
**Colour** see colour catalogue  
**Fixing** resting on the ground with resin epoxy (OPTIONAL with sleeves and metal rod)  
**Weight** 214 Kg  
**Pallet** 200 x 50 cm (1 unit, no stackable)  
 210 x 70 cm (2 units, no stackable)  
 210 x 150 cm (4 units, stackable)  
 Side palletisation

diseñador / design: magourban

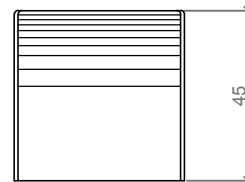


GRAP G

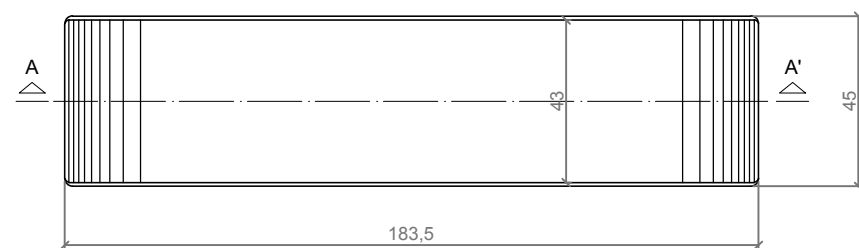
## GEOMETRIA / GEOMETRY



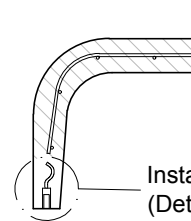
ALZADO / FRONT VIEW



PERFIL / RIGHT SIDE



PLANTA / TOP VIEW

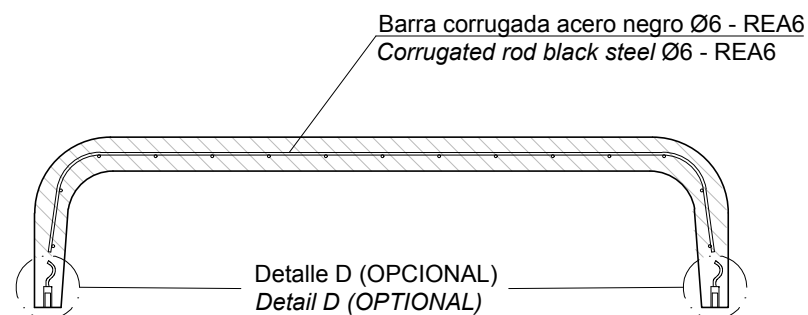


Instalación con varilla metálica (Detalle D, OPCIONAL)  
 Installation with metal rod (Detalle D, OPTIONAL)

SECCIÓN PARCIAL / PARTIAL SECTION

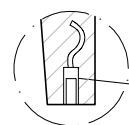
ESCALA / SCALE : 1/ 20

## ESPECIFICACIONES / SPECIFICATIONS



SECCIÓN A-A' / SECTION A-A'

Detalle D, OPCIONAL  
 (Instalación con varilla metálica)  
 Detail D (OPTIONAL)  
 (Installation with metal rod)

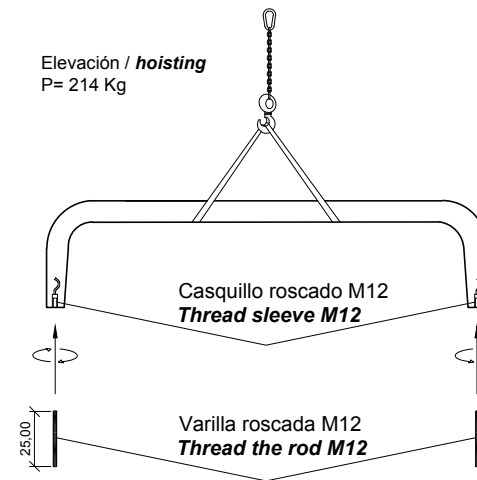


Casquillo M12 - Acero zincado alta precisión  
 Threaded sleeve M12 - Galvanized steel high precision

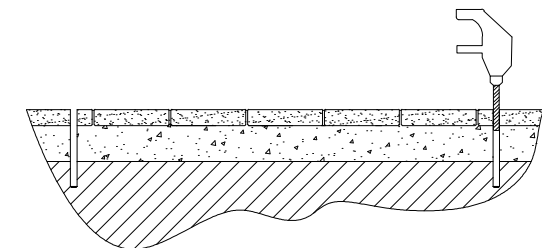
## MANIPULACIÓN PARA LA INSTALACIÓN OPCIONAL HANDLING FOR OPTIONAL INSTALLATION

- 1 Elevar y enroscar varillas inferiores  
 Lifting and screwing of lower links

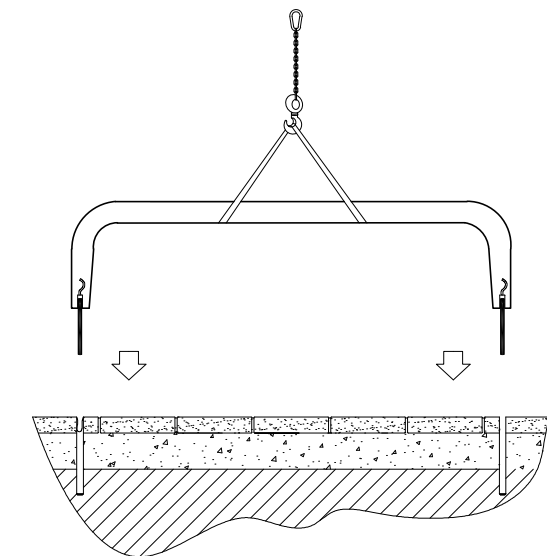
Elevación / hoisting  
 P= 214 Kg



- 2 Perforar agujeros de Ø1,4cm  
 Drill holes of Ø1,4cm



- 4 Insertar las varillas M12 en los agujeros  
 Insert metal rods M12 in holes



- 3 Verter resina epoxy  
 Pour resin epoxy

