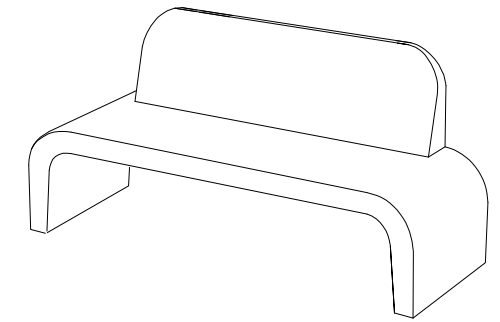


CARACTERISTICAS / FEATURES

Material hormigón Petra 1
Acabado decapado e hidrofugado
Dimensiones l. 183,50, a. 63, h. 85 cm
Color ver carta de colores
Fijación apoyado por su propio peso mediante resina epoxi
Peso 415 Kg
Palet 205 x 68 cm (1 unidad, no remontable)

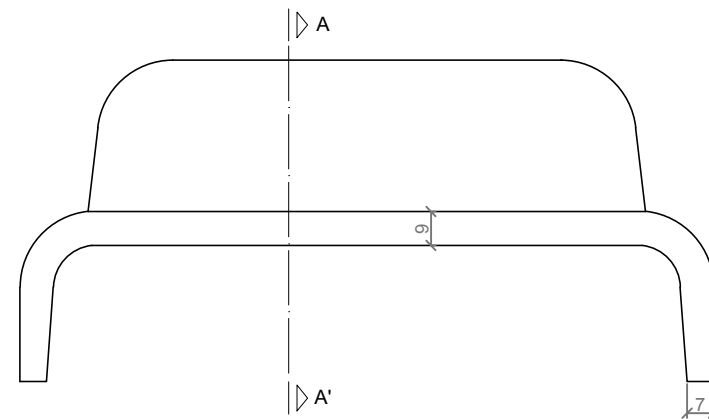
Material precast concrete Petra 1
Finish scaled and waterproofed
Dimensions l.183,50, w.63, h. 85 cm
Colour see colour catalogue
Fixing resting on the ground with epoxy resin
Weight 415 Kg
Pallet 205 x 68 cm (1 unit, no stackable)



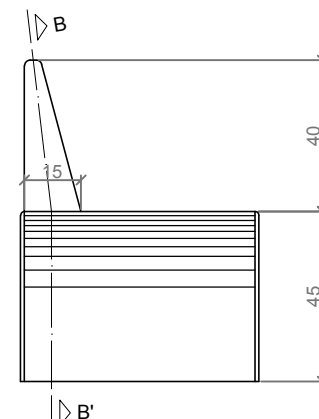
diseñador / design: magourban

GRAP R

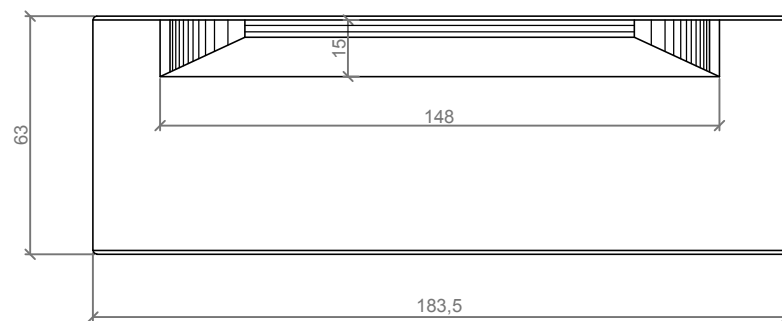
GEOMETRIA / GEOMETRY



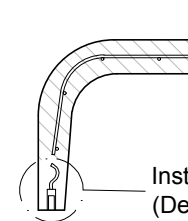
ALZADO / FRONT VIEW



PERFIL / RIGHT SIDE



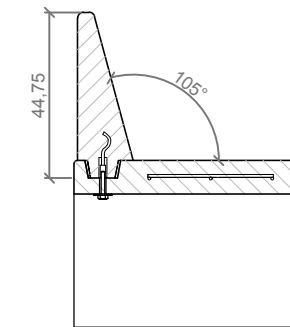
PLANTA / TOP VIEW



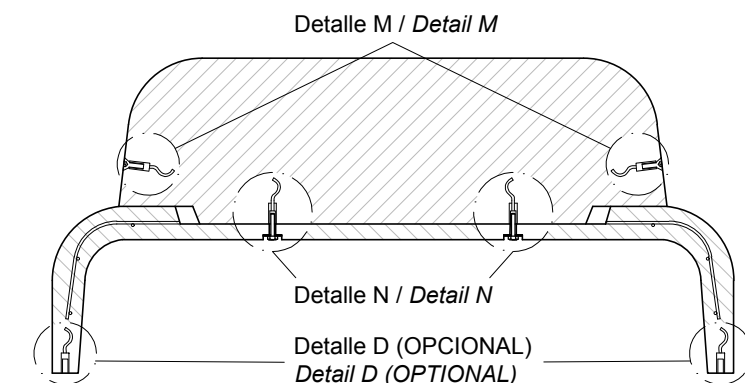
Instalación con varilla metálica
 (Detalle D, OPCIONAL)
 Installation with metal rod
 (Detalle D, OPTIONAL)

SECCIÓN PARCIAL / PARCIAL SECTION

ESPECIFICACIONES / SPECIFICATIONS



SECCIÓN A-A' / SECTION A-A'



SECCIÓN B-B' / SECTION B-B'

- Detalle M / Detail M: Tornillo avellanado M12 - Inox / Countersunk screw M12 - Inox
- Casquillo M12 - Acero zincado alta precisión / Threaded sleeve M12 - Galvanized steel high precision
- Detalle D (OPCIONAL) (Instalación con varilla metálica) / Detail D (OPTIONAL) (Installation with metal rod): Casquillo M12 - Acero zincado alta precisión / Threaded sleeve M12 - Galvanized steel high precision
- Detalle N / Detail N: Arandela M50 - Acero zincado alta precisión / Washer M50 - Galvanized steel high precision
- Tornillo M12x60 - Acero zincado alta precisión / Screw M12x60 - Galvanized steel high precision

ESCALA / SCALE : 1/ 20