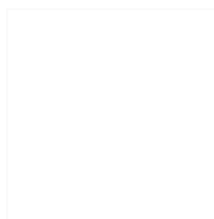
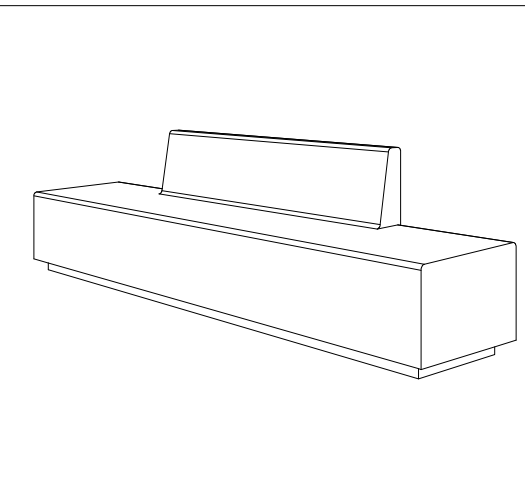


CARACTERISTICAS / FEATURES



Material hormigón Petra 1
Acabado decapado e hidrofugado
Dimensiones l. 280, a. 60, h. 80 cm
Color ver carta de colores
Fijación por su propio peso o mediante varilla metálica
Peso 1650 kg
Palet 290 x 70 cm

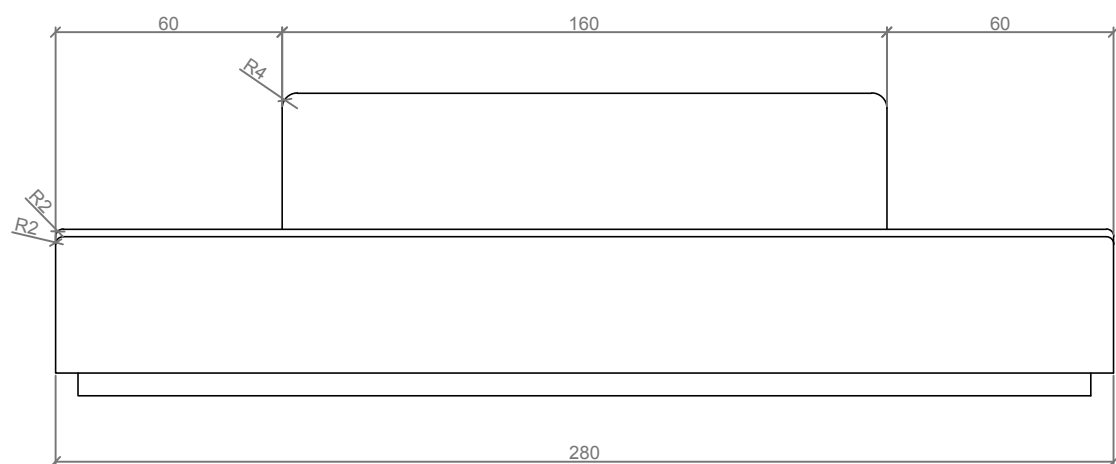
Material precast concrete Petra 1
Finish scaled and waterproofed
Dimensions l. 280, w. 60, h. 80 cm
Colour see colour catalogue
Fixing resting on the ground or with epoxy resin
Weight 1,650 kg
Pallet 290 x 70 cm



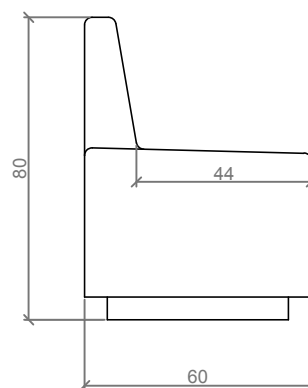
diseñador / design: magourban

PRACTIC

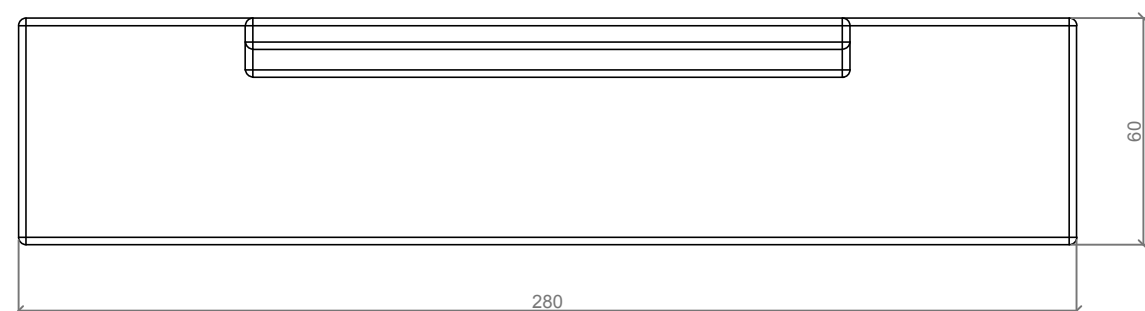
GEOMETRIA / GEOMETRY



ALZADO / FRONT VIEW



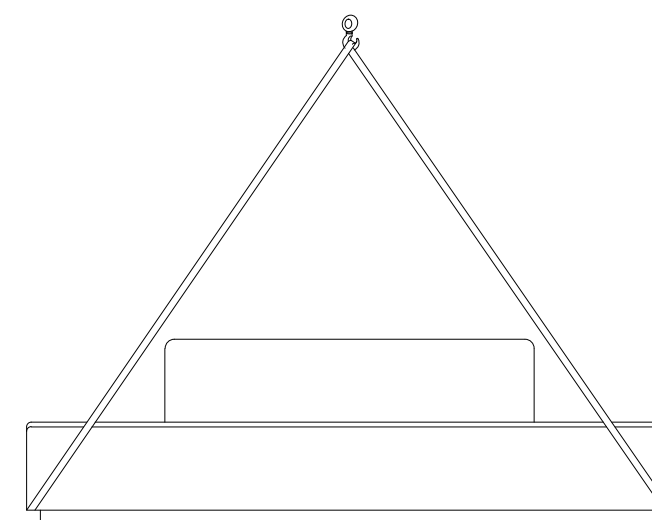
PERFIL / PROFILE VIEW



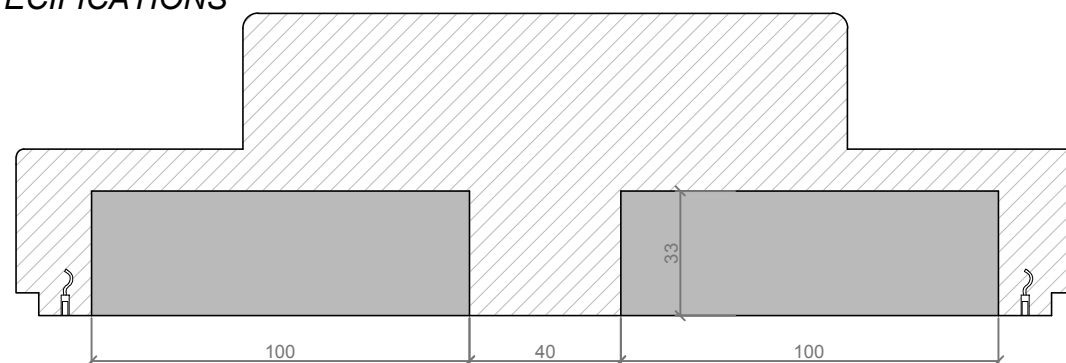
PLANTA / TOP VIEW

MANIPULACION E INSTALACION / HANDLING AND INSTALLATION

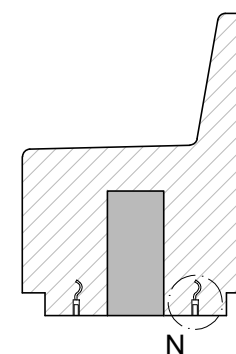
Elevación / Hoisting
 P= 1,650 kg



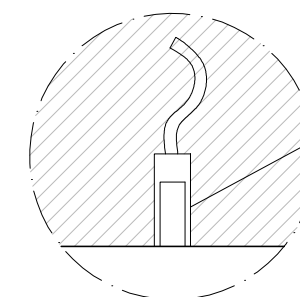
ESPECIFICACIONES / SPECIFICATIONS



SECCION A-A' / SECTION A-A'



SECCION B-B' / SECTION B-B'



Casquillo roscado M12
 Threaded sleeve M12

DETALLE N / DETAIL N