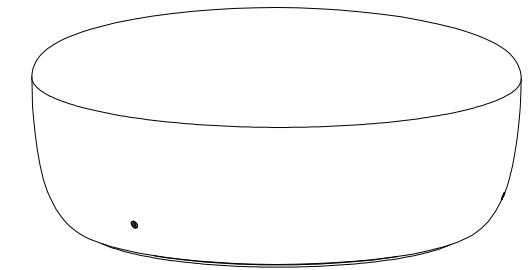


CARACTERISTICAS / FEATURES

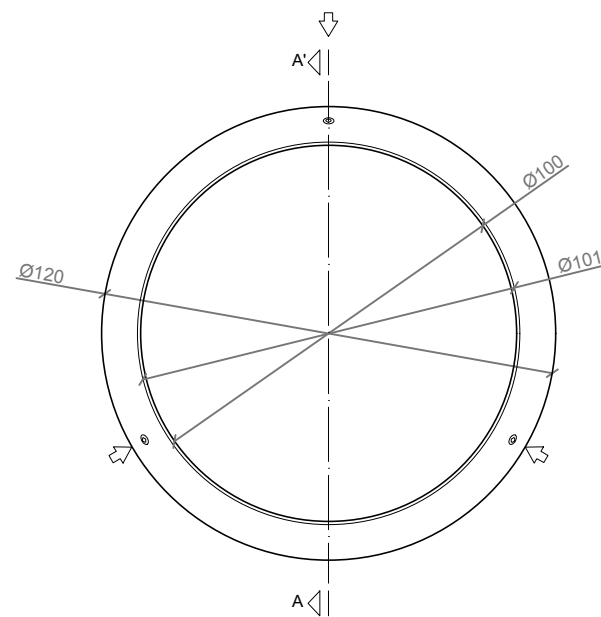
Material hormigón Petra 1
Acabado decapado e hidrofugado
Dimensiones Ø 120, h. 49 cm
Color ver carta de colores
Fijación por su propio peso o con resina epoxi
Peso 1115 kg
Palet 130 x 130 cm

Material precast concrete Petra 1
Finish scaled and waterproofed
Dimensions Ø 120, h. 49 cm
Colour see colour catalogue
Fixing resting on the ground or with epoxy resin
Weight 1,115 kg
Pallet 130 x 130 cm



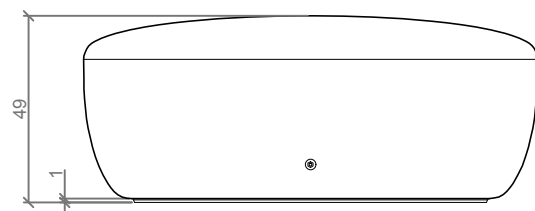
diseñador / design: Kutarq studio + YHY design

GEOMETRIA / GEOMETRY



Ubicación del casquillo roscado
 Location of threaded steel socket

VISTA INFERIOR / BOTTOM VIEW

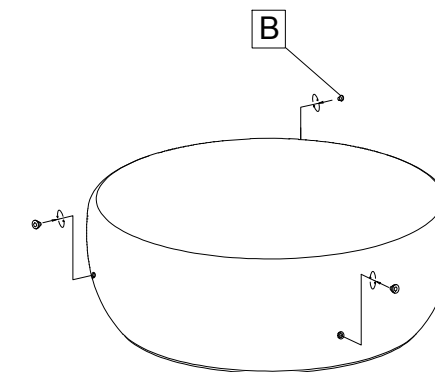


ALZADO / FRONT VIEW

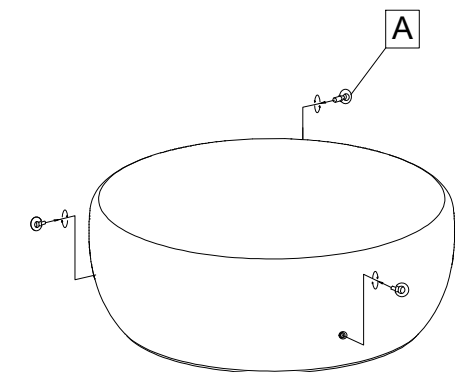
ESCALA / SCALE : 1/ 20

MANIPULACION E INSTALACION / HANDLING AND INSTALLATION

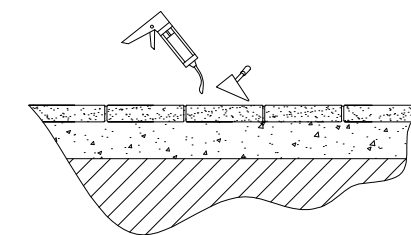
1 Extraer tapa / Extract stopper



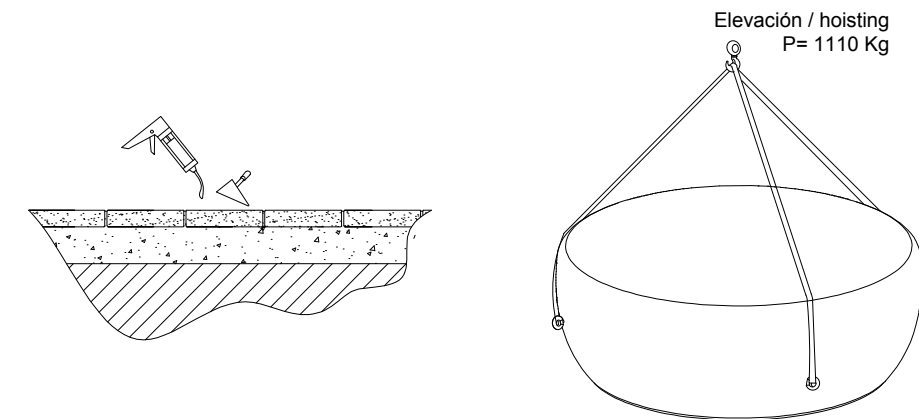
2 Enroscar cáncamo / Thread the eyebolt



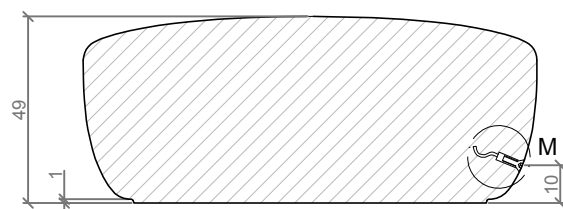
3 Verter resina epoxi / Pour epoxy resin



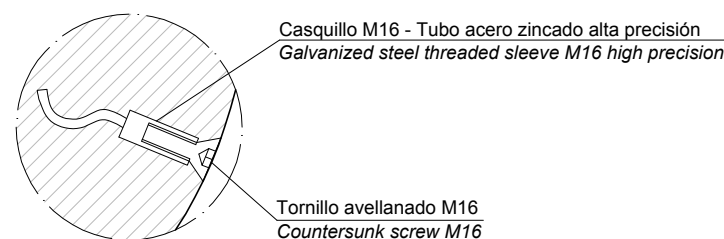
4 Elevar e instalar / Lift and install



ESPECIFICACIONES / SPECIFICATIONS



SECCION A-A' / SECTION A-A'



DETALLE N / DETAIL N

SISTEMA DE ELEVACION / LIFTING SYSTEM

