

## CARACTERISTICAS / FEATURES

<b>Material</b>	hormigón Petra 1
<b>Acabado</b>	decapado e hidrofugado
<b>Dimensiones</b>	consultar apartado geometría (respaldo y banco)
<b>Color</b>	ver carta de colores
<b>Fijación</b>	con pletina embebida al elemento y niveladores
<b>Peso</b>	Respaldo (1985 kg) - Banco (1068 kg)
<b>Palet</b>	Respaldo: 370x80x150h cm Banco: 370x80x70h cm

<b>Material</b>	precast concrete Petra 1
<b>Finish</b>	scaled and waterproofed
<b>Dimensions</b>	consult geometry section
<b>Colour</b>	see colour catalogue
<b>Fixing</b>	with plate embedded in the element and levellers
<b>Weight</b>	Backrest (1,985 kg) - Bench (1,068 kg)
<b>Pallet</b>	Backrest: 370x80x150h cm Bench: 370x80x70h cm

diseñador / design: GCA Arquitectes Associats



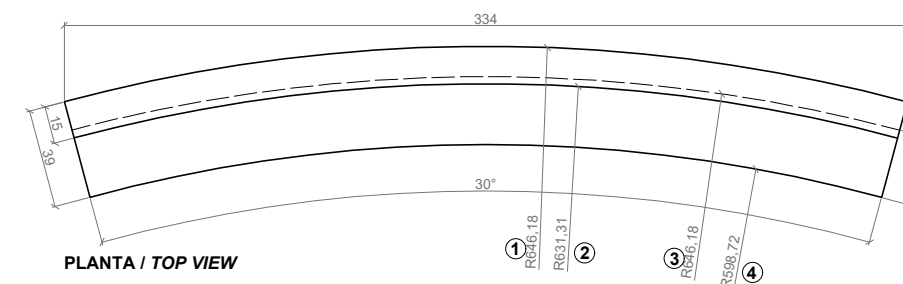
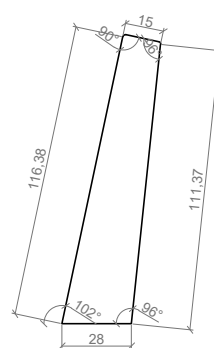
UNIO

## GEOMETRIA / GEOMETRY

### RESPALDO / BACKREST (1,985 kg)



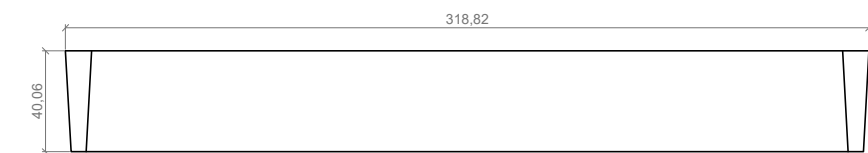
ALZADO / FRONT VIEW



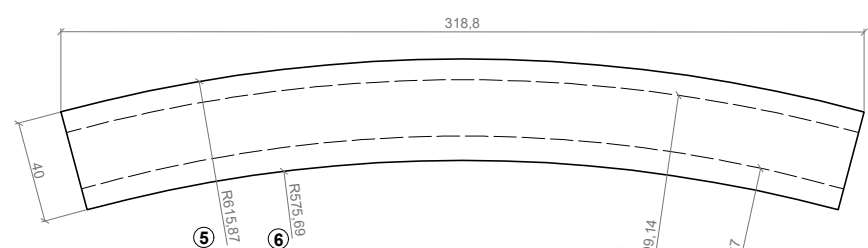
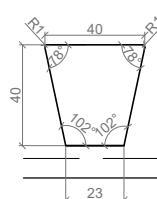
PLANTA / TOP VIEW

- 1 Radio superior exterior  
Upper outer radius
- 2 Radio superior interior  
Upper interior radius
- 3 Radio inferior exterior  
Lower outer radius
- 4 Radio inferior interior  
Lower interior radius

### BANCO / BENCH (1068 Kg)



ALZADO / FRONT VIEW



PLANTA / TOP VIEW

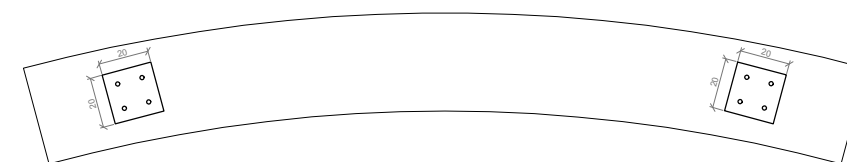
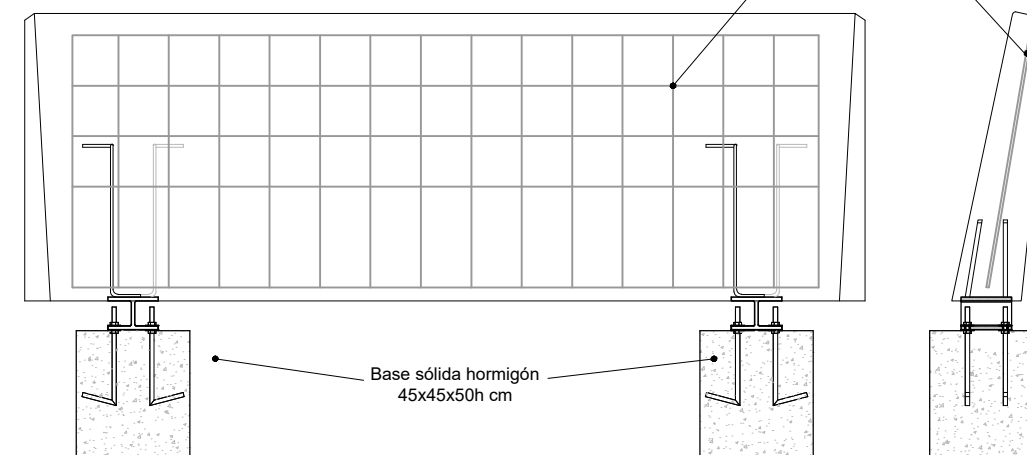
- 5 Radio superior exterior  
Upper outer radius
- 6 Radio superior interior  
Upper interior radius
- 7 Radio inferior exterior  
Lower outer radius
- 8 Radio inferior interior  
Lower interior radius

ESCALA / SCALE: 1/30

## DETALLES DE FIJACION / FIXING DETAILS

### RESPALDO / BACKREST

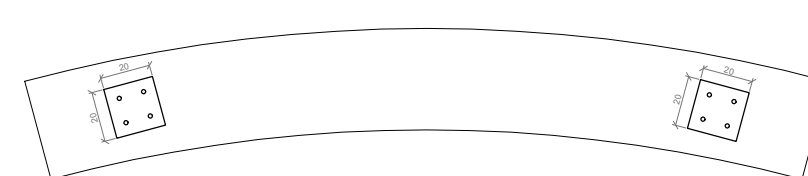
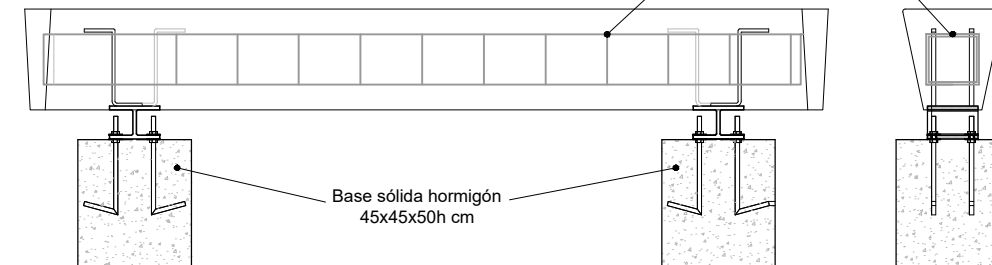
#### SECCION EN ALZADO / SECTION IN FRONT VIEW



#### SECCION EN PLANTA / SECTION IN TOP VIEW

### BANCO / BENCH

#### SECCION EN ALZADO / SECTION IN FRONT VIEW



#### SECCION EN PLANTA / SECTION IN TOP VIEW

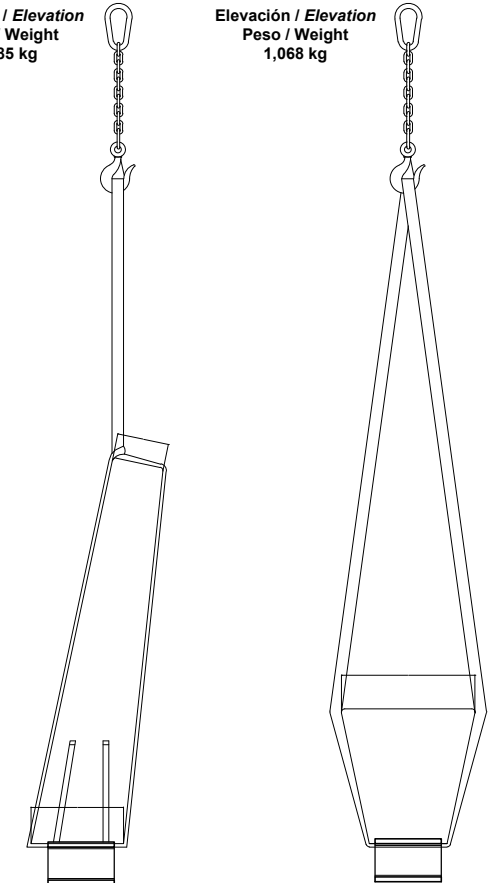
\*Consultar apartado especificaciones  
\*See specifications section

ESCALA / SCALE: 1/30

## MANIPULACION E INSTALACION HANDLING AND INSTALLATION

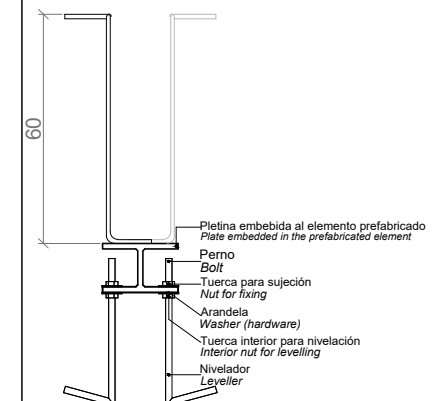
Elevación / Elevation  
Peso / Weight  
1,985 kg

Elevación / Elevation  
Peso / Weight  
1,068 kg

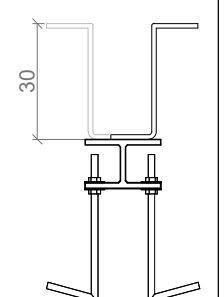


## ESPECIFICACIONES / SPECIFICATIONS

Pletina embebida al respaldo  
Plate embedded in the backrest



Pletina embebida al banco  
Plate embedded in the bench



ESCALA / SCALE: 1/20