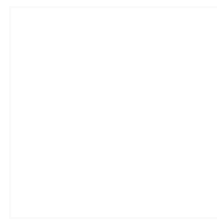


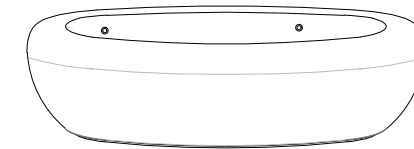
## CARACTERISTICAS / FEATURES



**Material** hormigón Petra 1  
**Acabado** decapado e hidrofugado  
**Dimensiones** l. Ø200, h. 60 cm  
**Color** ver carta de colores  
**Fijación** por su propio peso o mediante varilla metálica  
**Peso** 1090 kg / 780 L  
**Palet** 210 x 210 cm

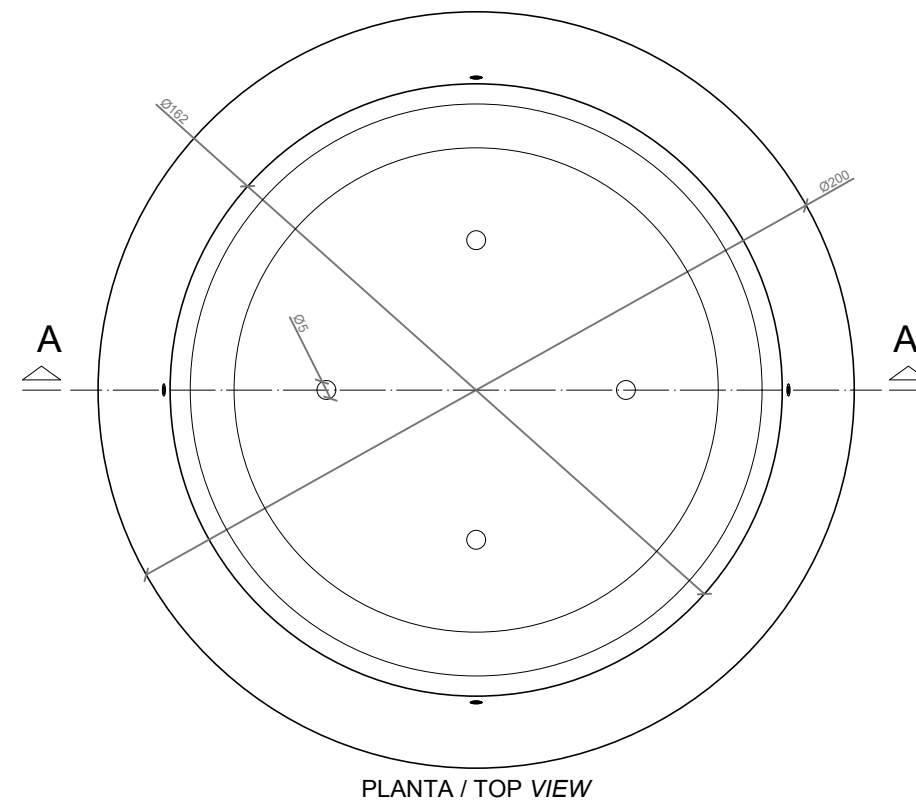
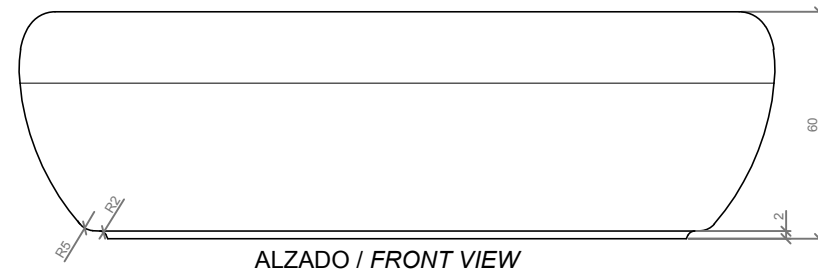
**Material** precast concrete Petra 1  
**Finish** scaled and waterproofed  
**Dimensions** l. Ø200, h. 60 cm  
**Colour** see colour catalogue  
**Fixing** resting on the ground or with metal rod  
**Weight** 1,090 kg / 780 L  
**Pallet** 210 x 210 cm

diseñador / design: Stimulo

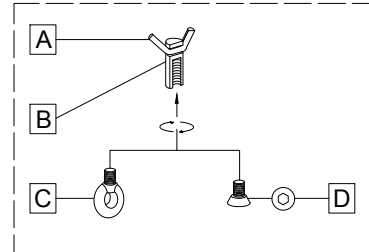
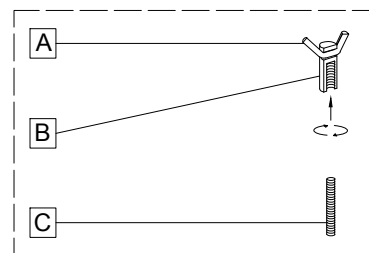


CANTORODADO 200

## GEOMETRIA / GEOMETRY



### SISTEMA DE FIJACION / ANCHORAGE SYSTEM

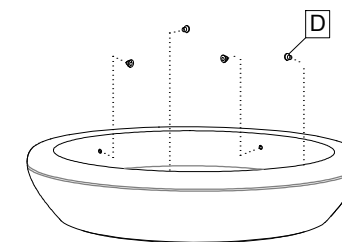


### SISTEMA DE ELEVACIÓN / LIFTING SYSTEM

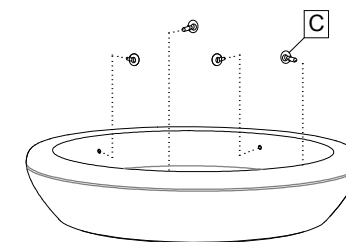
- A barra corrugada / corrugated rod
- B casquillo roscado / threaded sleeve
- C cáncamo / eyebolt
- D tapa / stopper
- E varilla roscada / threaded rod

## MANIPULACION E INSTALACION / HANDLING AND INSTALLATION

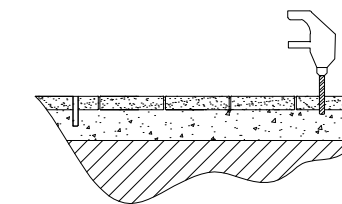
1 Extraer tapas / Extract stoppers



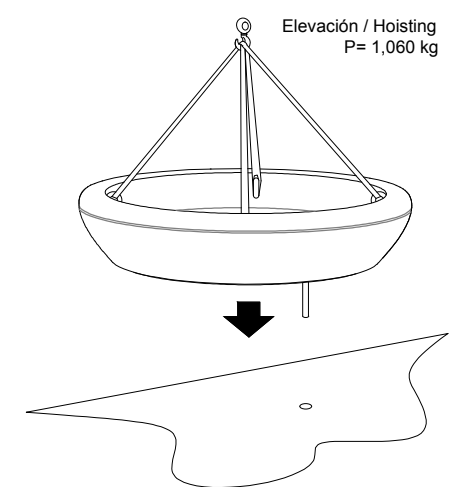
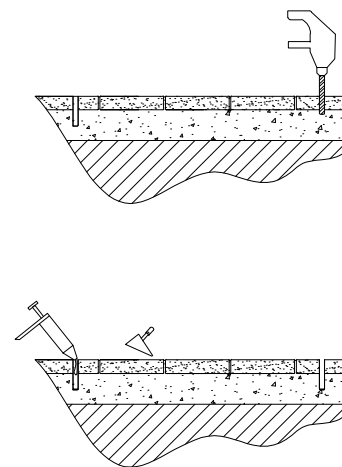
2 Enroscar cáncamo / Thread the eyebolt



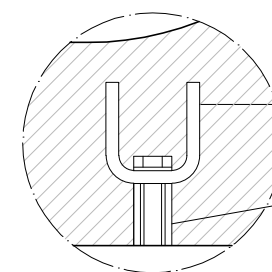
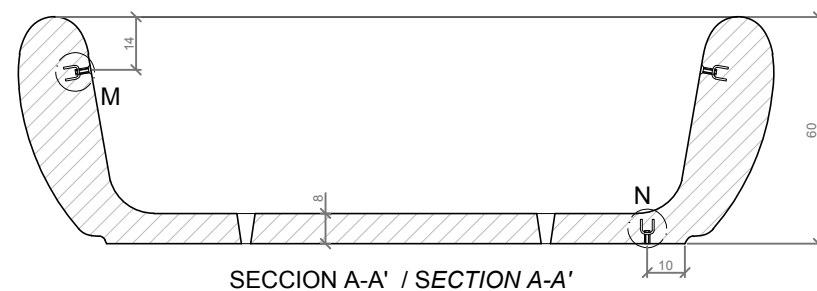
3 Perforar y verter resina epoxi  
Drill and pour epoxy resin



4 Insertar la varilla en el agujero  
Insert the metal rod in the hole



## ESPECIFICACIONES / SPECIFICATIONS

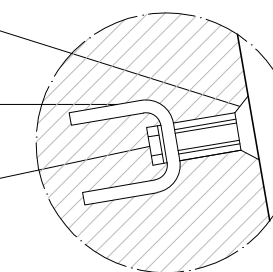


DETALLE N / DETAIL N

Tornillo avellanado M16  
Countersunk screw M16

Barra corrugada acero negro Ø8  
Corrugated rod black steel Ø8

Casquillo M12 de acero zincado  
Galvanized steel threaded sleeve M12



DETALLE M / DETAIL M