

## CARACTERISTICAS / FEATURES

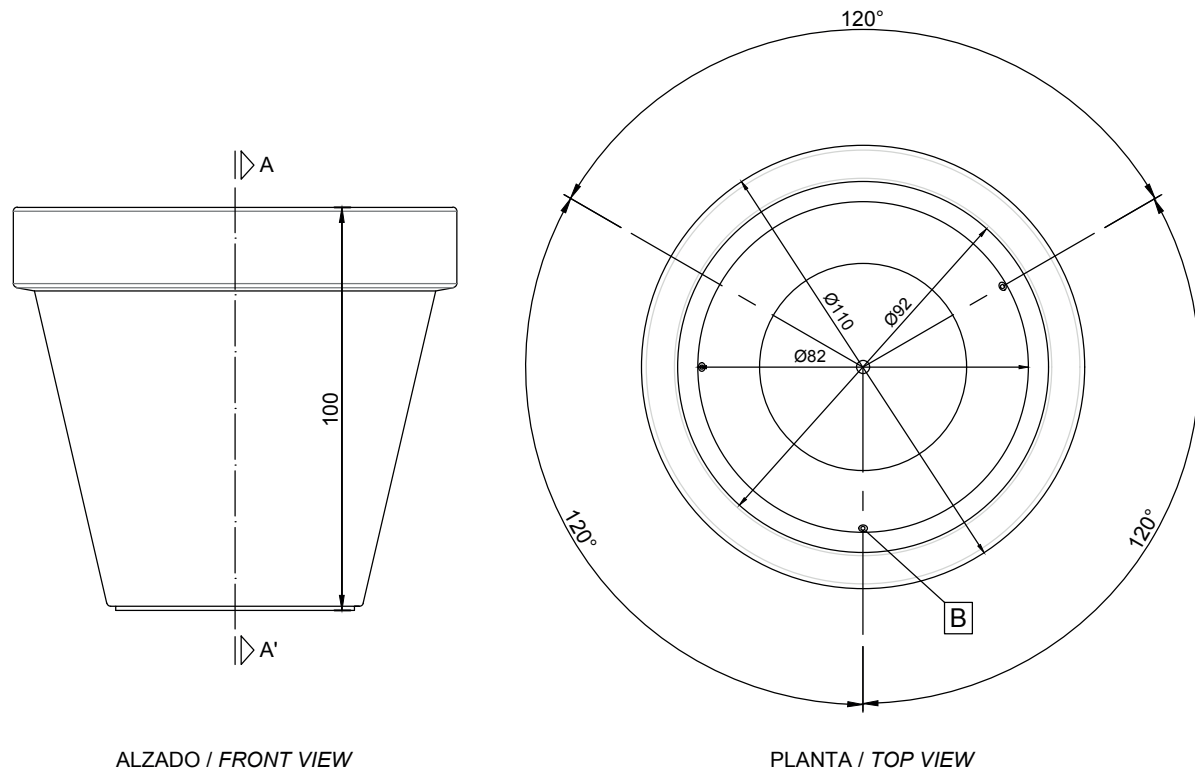
<b>Material</b>	hormigón petra 1
<b>Acabado</b>	decapado e hidrofugado
<b>Dimensiones</b>	Ø110, h. 100 cm.
<b>Color</b>	ver carta de colores
<b>Fijación</b>	anclado mediante varilla roscada y resina epoxi
<b>Peso</b>	520 kg
<b>Bulto</b>	120 x 100 x 115 cm
<b>Peso bulto</b>	535 kg

<b>Material</b>	precast concrete petra 1
<b>Finish</b>	scaled and waterproofed
<b>Dimensions</b>	Ø110, h. 100 cm
<b>Colour</b>	see colour catalogue
<b>Fixing</b>	anchored with metal rod and epoxy resin
<b>Weight</b>	520 kg
<b>Package</b>	120 x 100 x 115 cm
<b>Weight package</b>	535 kg

diseñador / design: I+D magourban

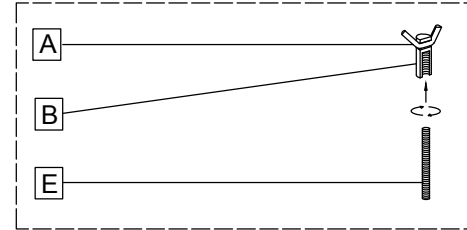


## GEOMETRIA / GEOMETRY

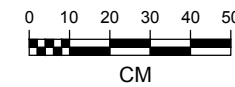
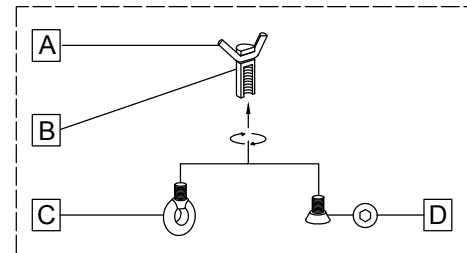


- barra corrugada / corrugated rod **A**
- casquillo roscado / threaded sleeve **B**
- cáncamo / eyebolt **C**
- tapa / stopper **D**
- varilla roscada / threaded rod **E**

### SISTEMA DE FIJACION / ANCHORAGE SYSTEM

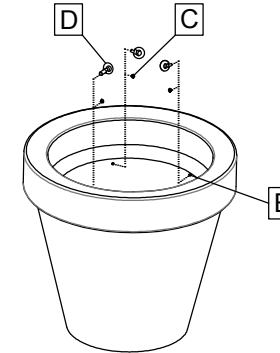


### SISTEMA DE ELEVACION / LIFTING SYSTEM

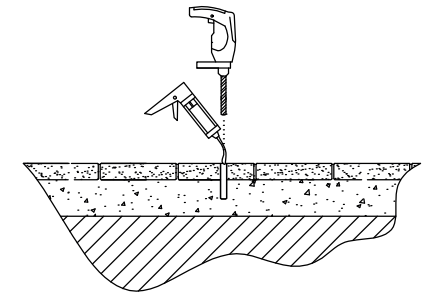


## MANIPULACION E INSTALACION / HANDLING AND INSTALLATION

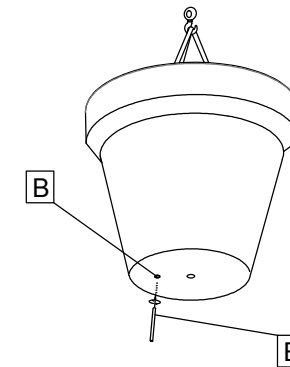
**1** extraer tapa / extract stopper



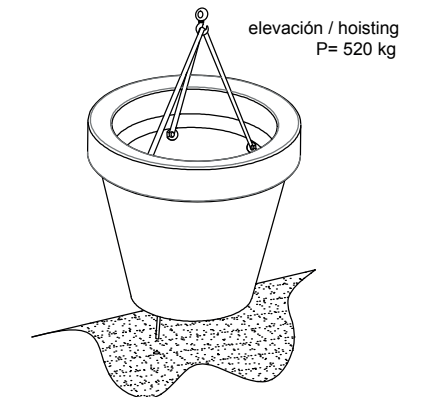
**2** perforar agujero y verter resina epoxi  
drill hole and pour resin epoxy



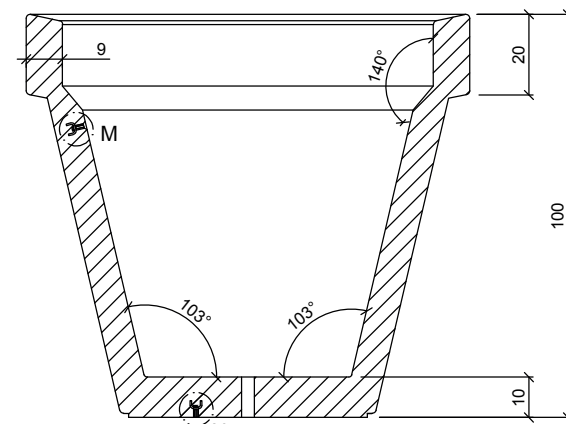
**3** elevar, enroscar la varilla  
lift, thread the rod



**4** insertar la varilla en el agujero  
insert metal rod in hole



## ESPECIFICACIONES / SPECIFICATIONS

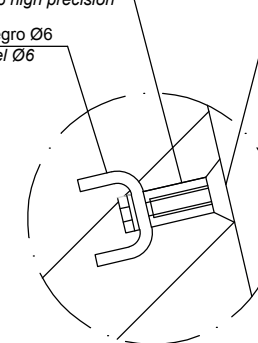


SECCION A-A' / SECTION A-A'

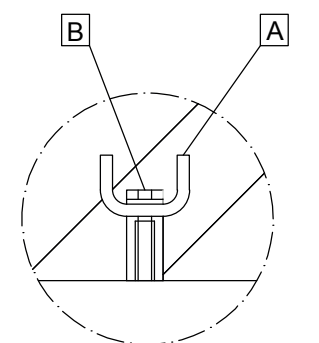
**B** Casquillo M16 acero zincado alta precisión  
Galvanized steel pipe M16 high precision

**A** Barra corrugada acero negro Ø6  
Corrugated rod black steel Ø6

Tapa - Tornillo avellanado M16  
Stopper - Countersunk screw M16 **D**



DETALLE M / DETAIL M



DETALLE N / DETAIL N