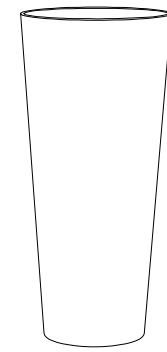


CARACTERISTICAS / FEATURES

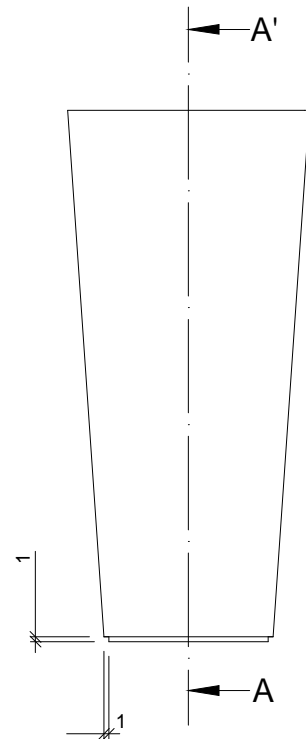
Material SMC
Acabado liso
Dimensiones Ø 50, h110 cm
Color ver carta de colores
Fijación simplemente apoyado
Peso / Capacidad 40 kg / 150 L

Material SMC
Finish smooth
Dimensions Ø 50, h110 cm
Colour see colour catalogue
Fixing resting on the ground
Weight 40 kg / 150 L

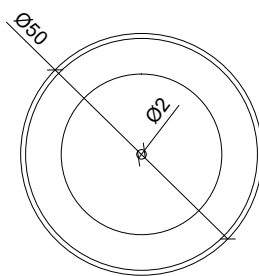


diseñador / design: I+D magourban

GEOMETRIA / GEOMETRY



ALZADO / FRONT VIEW

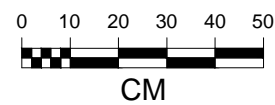


PLANTA / TOP VIEW

ESPECIFICACIONES / SPECIFICATIONS



SECCION A-A



S-MALVA CO50110

Tàrraga, Lleida - Tel. +34 973 15 87 03 - www.magourban.com - info@magourban.com

magourban