

CARACTERISTICAS / FEATURES

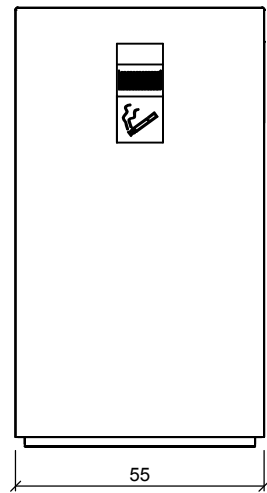
Material hormigón Petra1
Acabado decapado e hidrofugado
Dimensiones l. 55, a. 55, h. 97 cm
Color ver carta de colores
Fijación simplemente apoyado
Peso / Capacidad 345 kg / 65L
Palet 120 x 110 x 120 cm [4u]
Peso palet 1405 kg

Material precast concrete Petra1
Finish scaled & waterproofed
Dimensions l. 55, w. 55, h. 97 cm
Colour see colour catalogue
Fixing resting on the ground
Weight / Capacity 345 kg / 65 L
Package 120 x 110 x 120 cm [4u]
Weight pallet 1405 kg

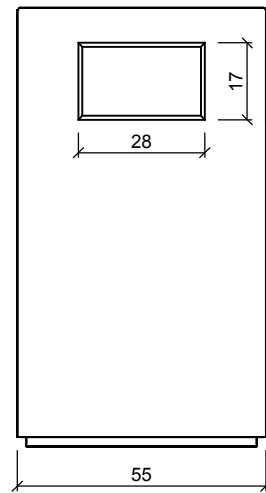
diseñador / design: I+D magourban



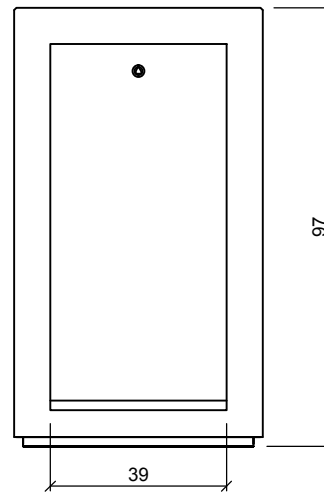
GEOMETRIA / GEOMETRY



ALZADO



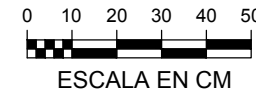
PERFIL



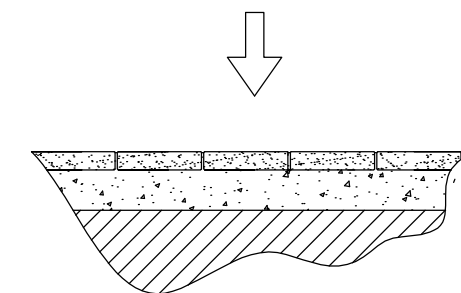
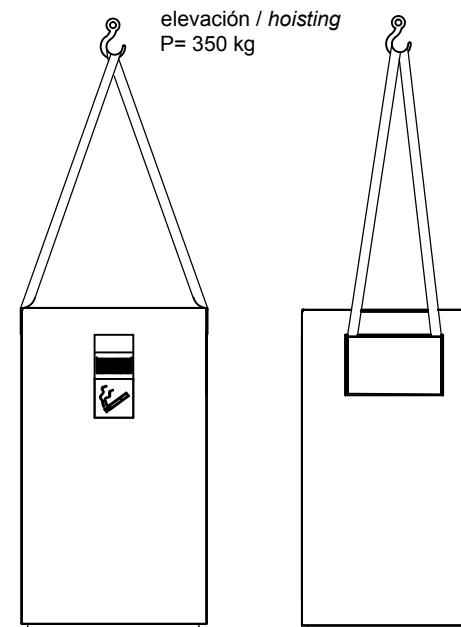
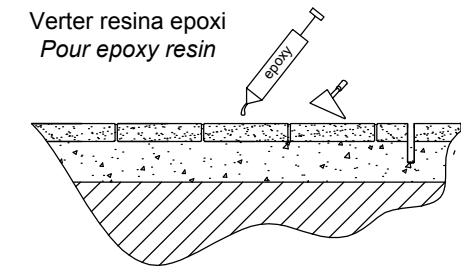
VISTA POSTERIOR



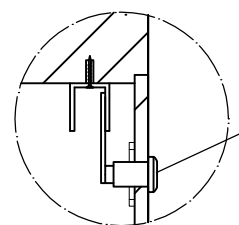
PLANTA



MANIPULACION E INSTALACION / HANDLING AND INSTALLATION



ESPECIFICACIONES / SPECIFICATIONS

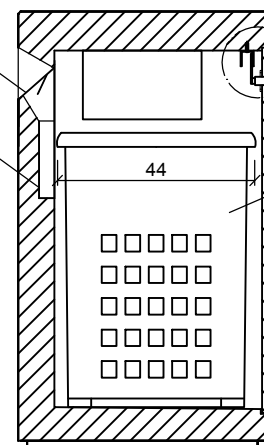


DETAIL

Cerramiento de llave triangular
 Triangular key closure

Chapa raspadora de acero inoxidable
 Scraper stainless steel sheet

Recipiente para colillas de aluminio
 Aluminum container for cigarette butts



SECTION

Puerta de acceso
 Access door

Recipiente de basura
 trash receptacle

Perfil de acero inoxidable
 Stainless steel profile