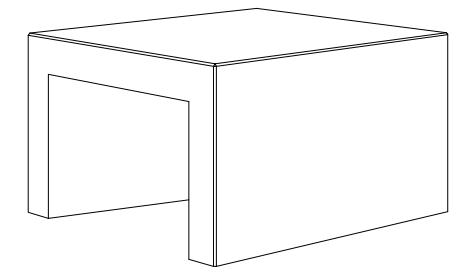


CARACTERISTICAS / FEATURES

Material hormigón Petra 1
Acabado decapado e hidrofugado
Dimensiones l. 80, a. 80, h. 48 cm
Color ver carta de colores
Fijación apoyado por su propio peso y con resina epoxi
Peso 394 kg
Palet 100 x 100 x 65h cm
Peso palet 410 kg

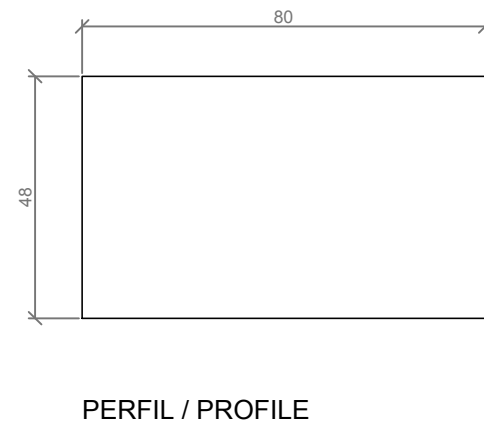
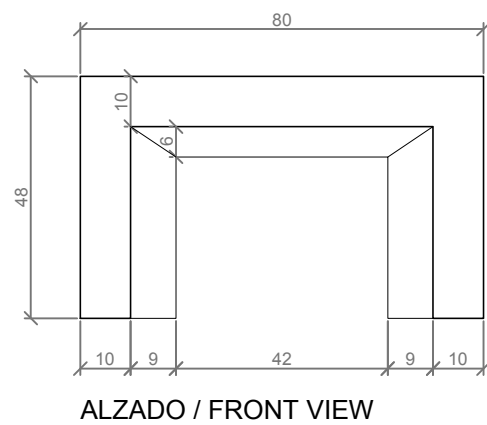
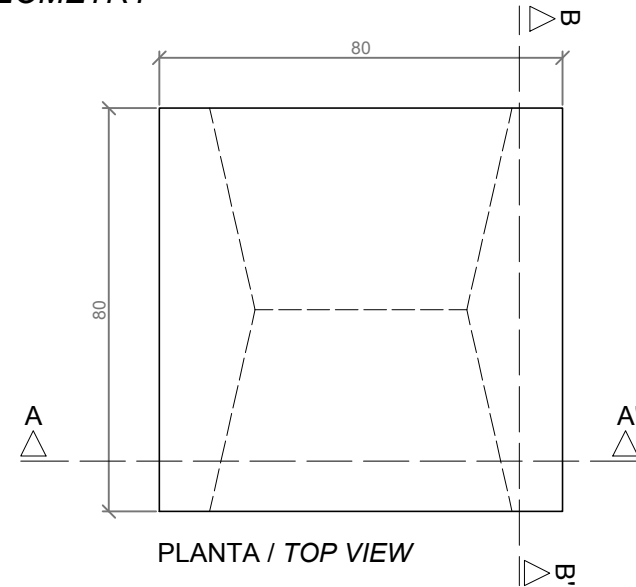
Material concrete Petra 1
Finish scaled and waterproofed
Dimensions l.80, w.80, h. 48 cm
Colour see colour catalogue
Fixing by its own weight and with epoxy resin
Weight 394 kg
Pallet 100 x 100 x 65 cm
Weight pallet 410 kg

diseñador / design: magourban



TARGA C

GEOMETRIA / GEOMETRY

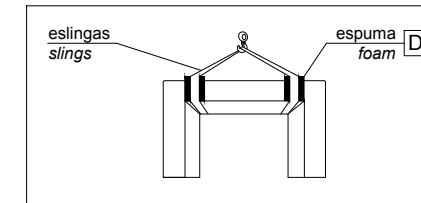


ESCALA / SCALE 1/15

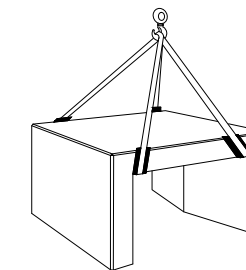
**MANIPULACION E INSTALACION
HANDLING AND INSTALLATION**

- 1 Elevar y enroscar la varilla
Lift and thread the rod

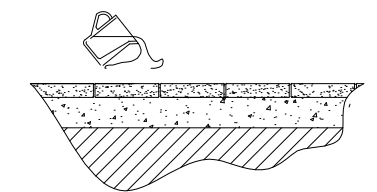
MUY IMPORTANTE / VERY IMPORTANT
 proteger las esquinas con espuma del embalaje
 protect the corners with packing foam



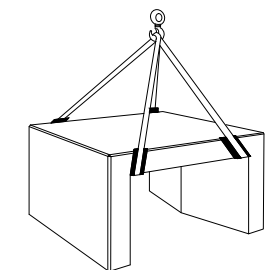
elevación / hoisting
 P= 394 kg



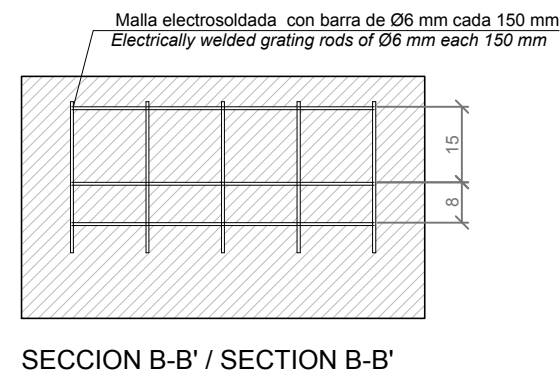
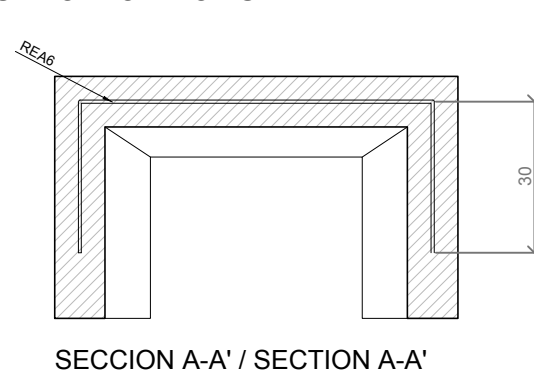
- 2 Verter resina epoxi / Pour epoxy resin



- 3 Colocar el banco / Place the bench



ESPECIFICACIONES / SPECIFICATIONS



Tàrrrega, Lleida - Tel. +34 973 15 87 03 - www.magourban.com - info@magourban.com