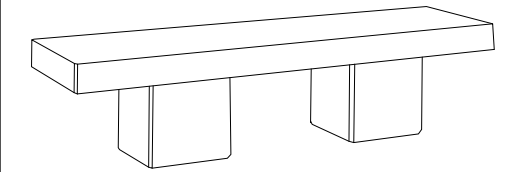
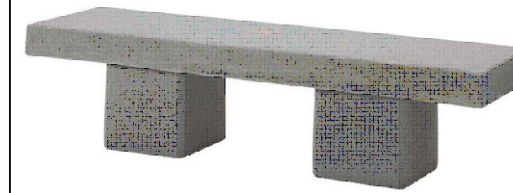


CARACTERISTICAS / FEATURES

Material hormigón Petra 1 + Petra 2
Acabado decapado
Dimensiones l. 190, a. 51, h. 47 cm
Color ver carta de colores
Fijación mediante resina epoxi
Peso 485 kg
Palet 210 x 55 cm (1 un)
 210 x 55 cm (2 un)

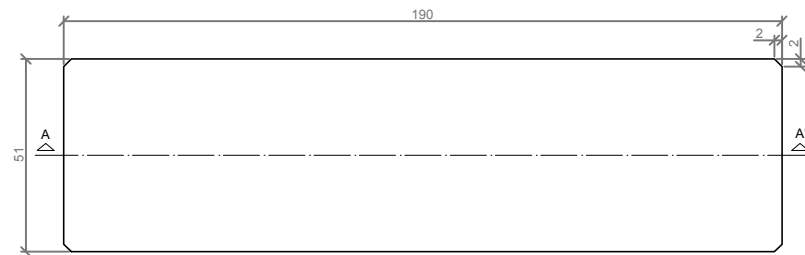
Material precast concrete Petra 1 + Petra 2
Finish scaled
Dimensions l. 190, w. 51, h. 47 cm
Colour ksee colour catalogue
Fixing through epoxy resin
Weight 485 kg
Pallet 210 x 55 cm (1 un)
 210 x 55 cm (2 un)

diseñador / design: magourban

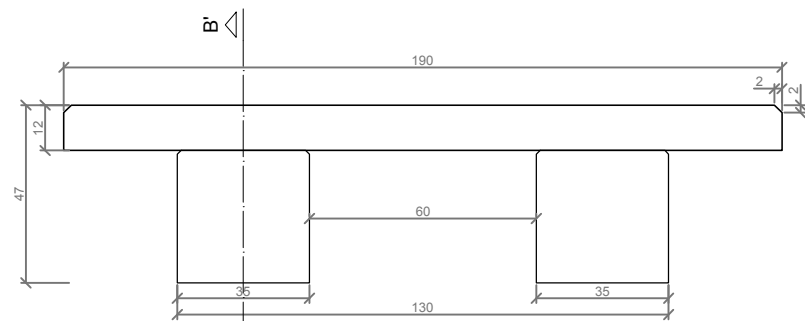


BALI

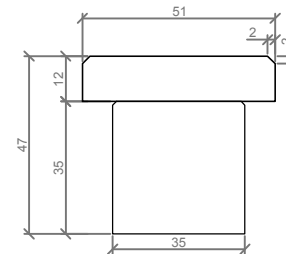
GEOMETRIA / GEOMETRY



PLANTA / TOP VIEW



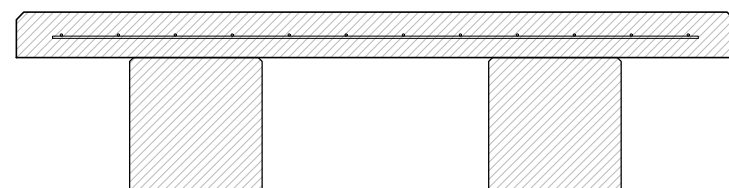
ALZADO / FRONT VIEW



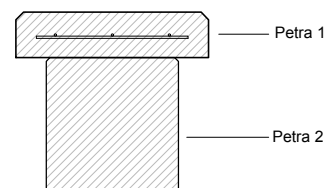
PERFIL / PROFILE

ESCALA / SCALE: 1/20

ESPECIFICACIONES / SPECIFICATIONS



SECCION A-A' / SECTION A-A'



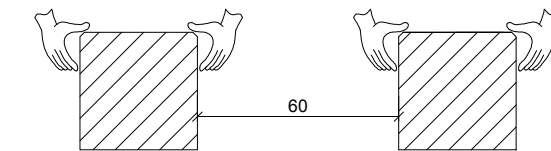
SECCION B-B' / SECTION B-B'

ESCALA / SCALE: 1/20

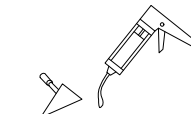
MANIPULACION E INSTALACION / HANDLING AND INSTALLATION

- 1 Levantar los pies del banco y colocarlos en el lugar indicado.
 Lift the feet of the bench and place them in the indicated place.

Elevación / Elevation P= 100 kg Elevación / Elevation P= 100 kg



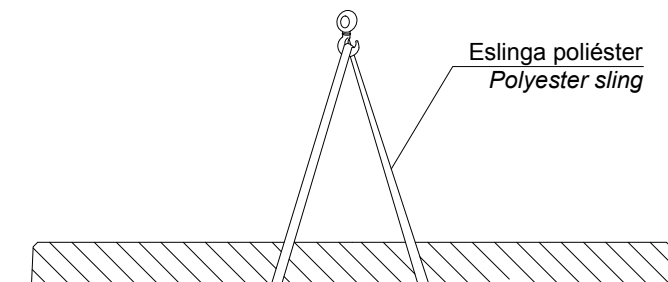
Resina Epoxi
Epoxy resin



Resina Epoxi
Epoxy resin

- 2 Levantar el asiento con eslingas y apoyarlo en los pies del banco.
 Lift the seat with slings and rest it on the bench feet.

Elevación / Elevation P= 256 kg



Eslinga poliéster
Polyester sling



Resina Epoxi
Epoxy resin

